

# T-ONE

## 深圳市精钻精密五金工具有限公司

ShenZhen JingZuan Precision Hardware & Tools Co., LTD

T-ONE 夹头 & 导套  
T-ONE CHUCK & GUIDE BUSH



### 深圳市精钻精密五金工具有限公司

ShenZhen JingZuan Precision Hardware & Tools Co., LTD

地址: 深圳市宝安区沙井镇上南工业区宏前一路4号 邮编: 518125

Add: No.4, Hongqian 1st Road, Shangnan industrial area,  
Shajing town, Bao'an district, Shenzhen, China

电话/Tel: 0755-27296210 /6211/6212

传真/Fax: 0755-27271159 /27296213

QQ: 879429227 2850995005

邮箱/E-mail: zgx@szjztools.com

网址/Web: www.szjztools.com

全国服务热线/Hot-Line: 400-880-9912



★本画册最终解释权归本公司所有, 文中图片及文字仅供参考, 产品以实物为准, 如有变更, 恕不另行通知, 详情请致电话0755-27296210/6211/6212 印刷日期: 2016/11/11

The album the final interpretation of the company, picture and text for the reference, the product in kind prevail, like has the change, without notice, please call 0755-27296210/6211/6212

JZH-Z-TONE 8-2000

## 公司简介

深圳市精钻精密五金工具有限公司成立于 2000 年，专业研发、生产、销售3A快速定位夹具系统、零点快速定位系统、球锁快速装夹系统及各类非标工装夹具；数控机床夹头、导套等机床配件。深圳公司建筑面积 3000 平方米。

公司拥有从德国、瑞士、美国、日本引进的先进生产设备。如德国 JUNG成型磨床、德国 ELB 高精度平面磨床、美国 MOORE 坐标磨床、瑞士 STUDER数控内外圆磨床、螺纹磨床、日本 OKUMA 加工中心、日本 OKUMA 数控车床、日本津上数控车床。公司建立了 20±0.5℃的恒温精磨房及高精度恒温计量中心，引进德国 ZEISS 三坐标测量仪、NIKON 投影仪、ZEISS 工具显微镜、TESA测高仪等高精度的检测设备。公司产品凭借品质稳定、性价比高，得到海内外客户的高度肯定。

公司全面推行 ISO9001 质量管理体系，为生产高品质产品提供了强有力的保证。

## Company profile

Shenzhen Jingzuan Precision Hardware & Tools Co.Ltd was established in 2000 and specialized in designing,manufacturing and sales of 3A fast positioning JIG system,zero point system,ball lock shaft system and all kinds of Nonstandard JIG,CNC machine collet chuck, guide bush, and etc machine tool accessories.Shenzhen company covers an area of 3,000 square meters.

The company has the advanced production facility introduced from Germany,Switzerland, the USA and Japan, such as JUNG form grinding machine and ELB high-precision surface grinding machine of Germany, MOORE jig grinding machine of USA, SWISS STUDER CNC internal and external grinding machine and thread grinding machine of Switzerland, and Japan OKUMA machining center,OKUMA CNC lathe and TSUGAMI CNC machine of Japan. The company established constant-temperature grinding room of 20 ± 0.5℃ and high-precision constant temperature measuring center, and introduced high-precision measuring equipment, such as German ZEISS coordinate measuring machine, NIKONV-16A projector, ZEISS tool microscope and TESA MICRO-HITE altimeter. The stable quality and high cost performance ratio are highly appreciated by domestic and overseas customers.

Our company fully implemented ISO 9001 quality management system and is a great asset to high-quality products of the company.



## 公司目标

我们T-ONE公司首要目标就是生产高性价比夹具来减少您的停机时间,在生产工艺方面,我们对原材料的选择和加工程序都有严格要求。

## 追求完美

T-ONE产品精度不仅超越了行业标准要求,而且质量可靠、耐用,我们现在能提供高精度产品(送料机、弹簧套筒、导套)用于传统数控车床和其它各种类型的机床。

## Our Corporate Mission

At T-ONE our Corporate Mission is to reduce your machine sdown-time by offering quality products at competitive prices.And within our production framework,we enforce apolicy of strict selection of materials and finishing processes.

## Engineered To Perfection

Not only are our finished products durable,they surpassed the accuracy requirements of many Institute of Standards.We are now able to offer our newly developed,high precision products (feed fingers,spring collets,guide bushes etc) to be used on NC automatics,conventional cam lathe and ather various types of dedicated machineries.

T-ONE产品系列满足您的各种需求

T-ONE array of products to meet your needs of every kind

我司除了大多数其它的夹头和导套外，T-ONE有能力提供给您低成本夹头用于试样生产。  
T-ONE is capable of supplying you with low-cost steel chucks for trial manufacturing in addition to most other kinds of chucks and bushes.

夹头 (COLLET CHUCK)

自由的选择来源于市场的变化。

我司夹头包括白钢夹头、钨钢夹头、主轴附轴夹头等产品。用于CNC自动车床和其它精密车床，您可以选择最适合您的一款。

Free choice from many variations

You can chose one best suited for your application from a large variety wich includes the steel type,carbide type, main spindle type and back spindle with seal type for CNC autolathes, cam-operated auto lathes,bench lathes and other dedicated machinery.



导套 (GUIDE BUSH)

用途广泛性。

和夹头一样,导套也有钨钢和白钢等款式,同样适用于您的各种型号机床。

Broad Range Of Application

As with our collet chucks,there is a wide selection of carbide type and steel type guide bushes just right for your machines

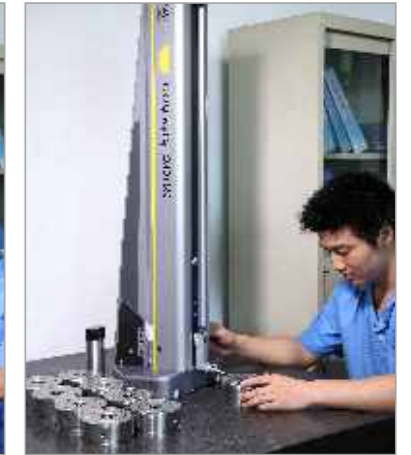


精密检测仪器

Precision testing machine



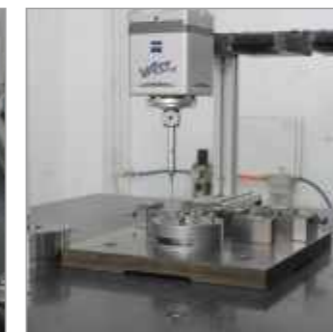
德国蔡司三坐标检测仪 ZEISS CONTURA  
ZEISS coordinate measuring machine



瑞士 TESA 测高仪 规格: 0-600  
TESA MICRO-HITE altimeter Version:0-600



NIKON V-16A 投影仪  
NIKON V-16A projector



VAST 测头  
VAST probe



德国蔡司工具显微镜  
ZEISS tool microscope



万能工具显微镜  
ZEISS universal tool-measuring microscope

生产车间一角

In the corner of the production workshop

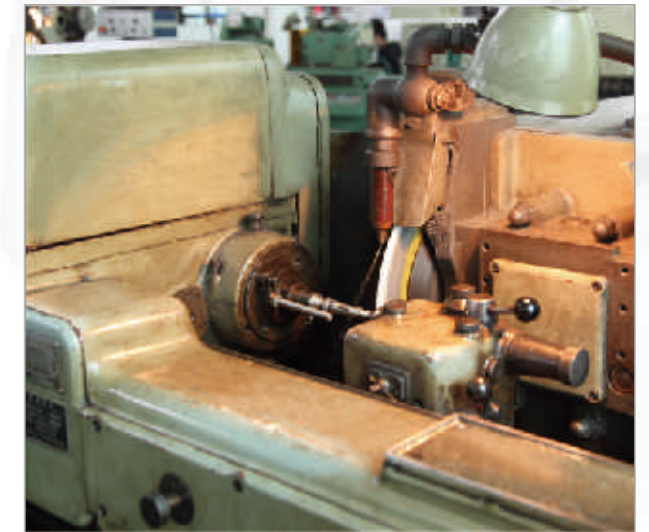
精准，我们能做到

Accuracy, we can do it.



完整的、一流的生产加工设备、专职的技术人员及优秀的生产工艺管控，保证了产品的交货期及配合客户应急的快速生产。

Complete, first-class processing equipment, professional technician and excellent manufacturing technique control, to ensure the product delivery and coordinate with emergency fast en manufacture as customer request.

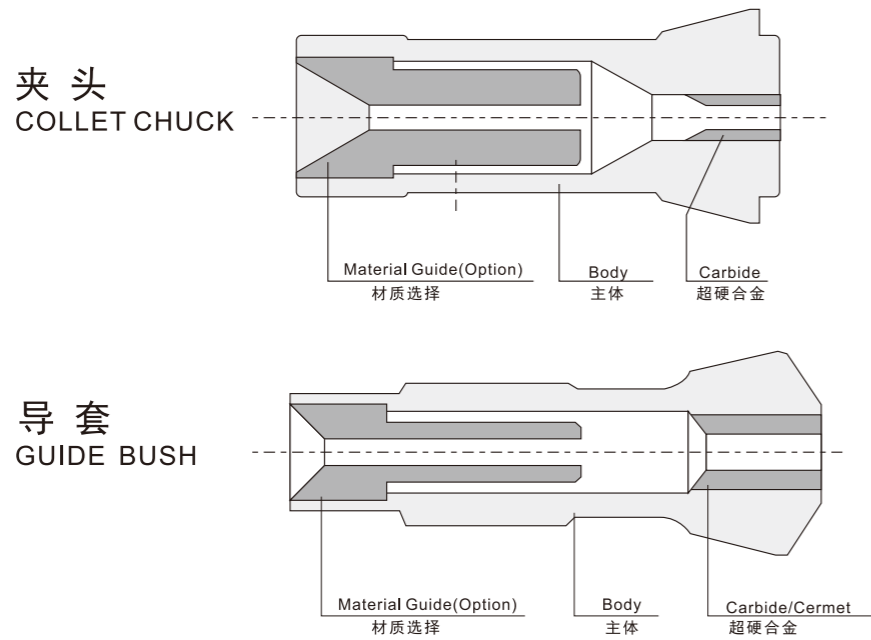


- ① 斯图特精磨加工 STUDER grinding machine
- ② MAKINO 加工中心 MAKINO machining center
- ③ 日本 OKUMA 车床 Japan OKUMA lathe
- ④ CNC 车床 CNC lathe
- ⑤ Thread machining
- ⑥ Internal and external grinding machine

我司夹头导套产品系列

The Lineup OF Our Collet Chucks and Guide Bushes

用于数控车床的夹头 Collet Chucks For CNC Auto Lathes	白钢、钨钢夹头 For Steel or Carbide Applications
用于数控车床的导套 Guide Bushes For CNC Auto Lathes	白钢、钨钢 For Steel, Carbide
附轴夹头 Attachment Collet Chucks	白钢、钨钢 For Steel or Carbide Apphcatlions
特殊夹头 Special Collet Chuks	钨钢 For Carbide Apphcatlions



精度测量是由带测量棒的千分表嵌入到夹头内部测量而来, 精度对照表。

The tolerance is to be measured by a dial-indicator with a measuring bar inserted in the chuck. Comparison Table: Tolerance.

尺寸范围 Size Category	检测点 Measuring Position	标准 Standard	高精度 High Precision
2-3	0.005	0.006	0.003
3-6	0.005	0.006	0.005
6-10	0.006	0.008	0.005
10-20	0.008	0.012	0.005

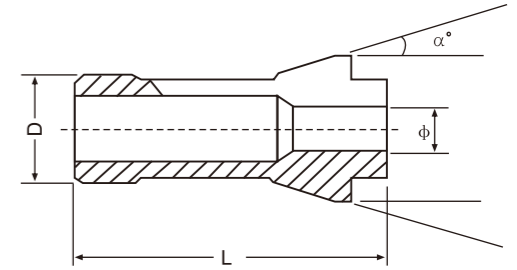
产品目录  
Product list

1 数控车床夹头 CNC Lathe Collet		Pages 10-11
2 数控车床导套 CNC Lathe Guide Bush		Pages 12
3 滚齿机夹头 Rolling gear machine chuck		Pages 13-14
4 磨刀机夹头 Pull-Type Collets		Pages 15-22

产品目录  
Product list

<p>5</p> <p>送料机 Feed Chuck</p>		<p>Pages 23</p>
<p>6</p> <p>延长杆、攻牙器 、ER弹性筒夹 Extension rod、ER Collet chuck、 Tapping machine</p>		<p>Pages 24-36</p>
<p>7</p> <p>承接非标订做 OEM Sevice available</p>		<p>Pages 37-38</p>

1. 钨钢夹头  
Dead length collets



机床厂家 (Brand)	型号 (Model)	D	L	$\alpha$
TSUGAMI 津上	T7 BM07 B007	10.2	47.3	20°
	NT17 NP17	23.8	62	15°
	NT16 NP16 NP12	23.8	62	15°
	BO123-II BO124-II BO125-II BO12 BS12	20	67	14°
	BO203-II BO204-II BO205-II BO18 BS18 S20	28	77	16°
新增型号: BM16 NP11 NT11 NP11D NT20 NP20 BM16 BS20 S25 BU26 BS26 BS32 BS26A BS25 BS26B BS25 G300				

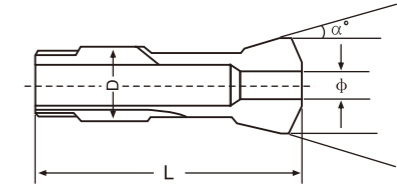
机床厂家 (Brand)	型号 (Model)	D	L	$\alpha$
CITIZEN 西铁城	F10 L10 D10 G10	15	45.5	15°
	A12 B12 F12 M12 K12 C12	16	62.0	16°
	L16 F16 G16 E16 C16 K16	26	67	15.25°
	M16 L20 F20 E20	26	67	15°
	L25 F25 E25	30	78	16°
	B L12	19.05	77.2	15°
	B L16	22	81	15°
	B L20	33	100	15°
新增型号: BL25 R04 R07 E32 G32 C32 L32 M32 VNC32 A32				

机床厂家 (Brand)	型号 (Model)	D	L	$\alpha$
STAR 星牌	JNC10 SNC10 RNC10	15	64	16°
	SH12 VNC12 SNC15 SJ15	18	67	15°
	SE16 SH16 RNC16 SR16 SA16	20.2	67	16°
	JNC20 SR20 VNC20	26	67	15°
	JNC32 JNC25 KNC25 KNC32	37	92	15°
新增型号: SW7 SJ8R太口 SH7 SR10 SA12 SE12 SL12 S13 KJR16 KJR25 KNC16 JNC16 KJR16太口 SNC18 SE16 SB16 ECAS16 KNC20 SNC15太口 ECAS20 SNC25 KJR25 ECAS32 SB-20 SR-10J SR-20J				

## 1. 钨钢夹头 Dead length collets

机床厂家 (Brand)	型号 (Model)	D	L	$\alpha$
NOMURA 野村	NS-P1053 NW-10K	16	53	15°
	NS-P1653 NS-P1253 WN16K	20	67	16°
	新增型号: P20 NS-P8410 NS-P8420 NN-10K NN-12 NN-13 SN-160 P2553 NN-16 NN-20 NN-25 NN-30 NSP8410 NSP8420			
机床厂家 (Brand)	型号 (Model)			
TODAYCNC 今日标准	新增型号: TCKZ-16CO TCKZ-16C3 TCKZ-16T/N TCKZ-20C3 TCKZ-16S TCKZ-20S TCKZ-25C TCKZ-25D TCKZ-32C TCKZ-32D TCKJ-35 TCKM-32 TCKM-32S TCMD-42 TCKF-35 TCKF-45 TMKW-300			
机床厂家 (Brand)	型号 (Model)	D	L	$\alpha$
STROHM	M125 M105	15	64	16°
机床厂家 (Brand)	型号 (Model)	D	L	$\alpha$
RIKEN 理研	SAD25	30	66	15°
	SAD40	48	84	15°
机床厂家 (Brand)	型号 (Model)	D	L	$\alpha$
MIYANO 宫野	171E(BNC34)	42	94	15°
	173E (BNC42)	48	94	15°
	BN7-16	28	70	15°
	147E	27	73.5	15°
	140E	22	55	15°
	176E	56	94	15°
新增型号: BNC50 148E 163E 177E 185E 144E 161E BNC12 BNC20 BNC75-2 BND34 BND42 BND51 BC-D200 MLA-20D MLA-30D B6-20 BJ20 BNE34 BNE51 BNJ34 BNJ42 AL-S25				
机床厂家 (Brand)	型号 (Model)	D	L	$\alpha$
TORNOS 瑞士	M7 MS7	10	47.5	20°
	R10 M10	13	64	16°
	R16	20	67	16.25°
	DECO2000-7	13	64	16°
	DECO2000-10	13	64	16°
	DECO2000-13/16 ENC162	20	54	15°
	DECO2000-20 ENC163	25	77	16°

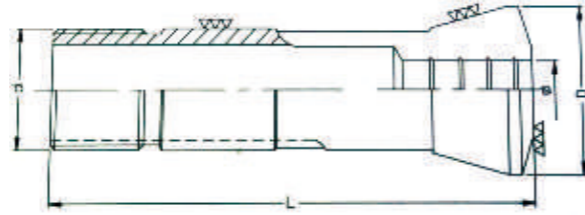
## 2. 钨钢导套 Dead Guide Bush



机床厂家 (Brand)	型号 (Model)	D	L	$\alpha$
TSUGAMI 津上	T7 BM07 B007	10.2	52.3	16°
	NT17 NP17	23	72	16°
	NT16 NP16	23	72	16°
	BO123-II BO124-II BO125-II BO12 BS12	22	70.5	16°
	BO203-II BO204-II BO205-II BO18 BS18 S20	30	70	16°
	BM16	30	75	15°
	新增型号: NP11 NT11 NP11D NT20 NP20 BS20 BU20 S25 BU26 BS26 BS32 NT32 NP32 A32 BS26A BS25 BS26B BS25			
机床厂家 (Brand)	型号 (Model)	D	L	$\alpha$
CITIZEN 西铁城	F10 L10 D10 G10	16	50	16°
	B12 F12 M12 K12 C12	18	60	30°
	L16 F16 G16 E16 C16 K16	30	59	15.75°
	M16 L20 F20 E20	30	59	16°
	L25 F25 E25	34	87.5	10°
	新增型号: BL12 BL16 BL20 BL25 R04 R07 E32 G32 C32 L32 M32 VNC32			
机床厂家 (Brand)	型号 (Model)	D	L	$\alpha$
STAR 星牌	JNC10 SNC10 RNC10	16	50	16°
	SH12 VNC12 SNC15 SJ15	21	57.5	12.5°
	SE16 SH16 RNC16 SR16 SA16	22	68	16°
	JNC20 SR20 VNC20 KNC20	30	59	16°
	新增型号: JNC32 JNC25 KNC25 KNC32 SW7 SJ8R太口 SH7 SR10 SA12 SE12 SL12 S13 KJR16 KJR25 KNC16 JNC16 KJR16太口 SNC18 SE16 SB16 ECAS16 SNC15太口 ECAS20 SNC25 KJR25 L32 M32			
机床厂家 (Brand)	型号 (Model)	D	L	$\alpha$
NOMURA 野村	NS-P1053 NW-10K	16	63	16°
	NS-P1653 NS-P1253 WN16K	22	70.5	16°
	新增型号: P20 NS-P8410 NS-P8420 NN-10K NN-12 NN-13 SN-160 P2553 NN-16 NN-20 NN-25 NN-30 NSP8410 NSP8420 NN20KF NNCP2553 NN25K			
机床厂家 (Brand)	型号 (Model)	D	L	$\alpha$
STROHM	M125 M105	18	60	30°
机床厂家 (Brand)	型号 (Model)	D	L	$\alpha$
TORNOS 瑞士	M7 MS7	13	68	30°
	R10 M10	16	59	16°
	R16	22	68	16°
	DECO2000-7	16	59	16°
	DECO2000-10	16	59	16°
	DECO2000-13/16 ENC162	24	61	30°
	DECO2000-20 ENC163	28	81	30°

## 2. 其它型号自动车床电脑车床钨钢嗦咀

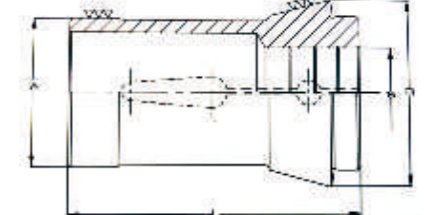
Other types of CNC Lathe carbide dead length collets



机床厂家 (Brand)	型号 (Model)	D	L	MaxΦ	类型 (Type)
江黑	15#, 名阳, 洽群, 铸峰, 永和. . . . .	Φ19.0	76	Φ15.0	精密筒夹
	20#, 名阳, 洽群, 铸峰, 永和. . . . .	Φ25.0	102	Φ20.0	精密筒夹
YB	25#, 永和, 专用机. . . . .	Φ32.0	102	Φ25.0	精密筒夹
	32#, 永和, 专用机. . . . .	Φ39.0	119	Φ32.0	精密筒夹
	42#, 永和. . . . .	Φ52.0	137	Φ42.0	精密筒夹
FUJI	0825#, 富士, 王主, 源昇. . . . .	Φ16.0	72.5	Φ12.0	精密筒夹
	1820#, 富士. . . . .	Φ28.0	98	Φ20.0	精密筒夹
	1825#, 富士, 名阳, 王主. . . . .	Φ35.0	124	Φ25.0	精密筒夹
	32#, 名阳, 王主. . . . .	Φ43.0	137	Φ32.0	精密筒夹
DAIWA	10#, 大和. . . . .	Φ15.0	61.5	Φ10.0	精密筒夹
	10#, 大和, 王主. . . . .	Φ17.0	68	Φ12.0	精密筒夹
	15#, 大和. . . . .	Φ25.0	85	Φ17.0	精密筒夹
	20#, 大和. . . . .	Φ25.0	102.5	Φ20.0	精密筒夹
MAZAK42#	马扎克电脑车床, 数控攻牙机	Φ55.0	110	Φ42.0	精密筒夹
INDEX六轴	德国电脑自动车床	Φ46.0	120	Φ42.0	精密筒夹
全能	25#桌上车床	Φ32.0	103	Φ25.0	精密筒夹
5C	电脑车床 工具车床	Φ31.75	87	Φ25.0	精密筒夹
16C	美国哈挺电脑车床	Φ48.0	117	Φ42.0	精密筒夹
20C	美国哈挺电脑车床	Φ60.0	163	Φ52.0	精密筒夹

## 3. 其它型号自动车床电脑车床钨钢嗦咀

Other types of CNC Lathe carbide dead length collets

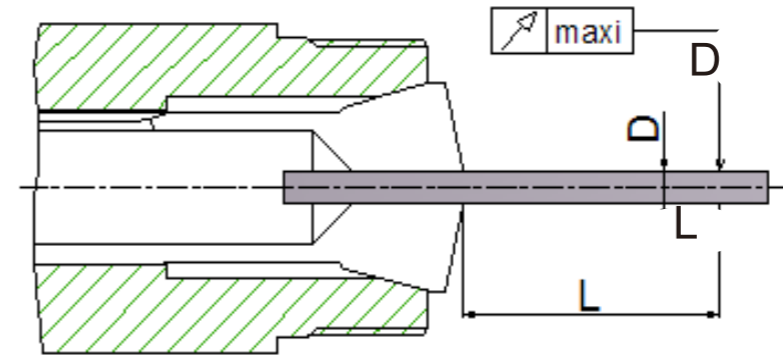


机床厂家 (Brand)	型号 (Model)	D	L	MaxΦ	类型 (Type)
TRAUB15#	140E德国特劳普, 利高. . . . .	Φ22.0	55	Φ15.0	精密筒夹
TRAUB20#	148E德国特劳普, 利高. . . . .	Φ28.0	70	Φ20.0	精密筒夹
TRAUB25#	161E德国特劳普, 利高. . . . .	Φ32.0	75	Φ25.0	精密筒夹
INDEX25#	162E德国特劳普. . . . .	Φ35.0	70	Φ25.0	精密筒夹
INDEX30#	163E德国特劳普. . . . .	Φ35.0	80	Φ30.0	精密筒夹
利高32#	164E德国特劳普, 利高. . . . .	Φ38.1	108	Φ32.0	精密筒夹
INDEX36#	171E德国特劳普, OKUMA. . . . .	Φ42.0	94	Φ36.0	精密筒夹
INDEX42#	173E德国特劳普, 伍将. . . . .	Φ48.0	94	Φ42.0	精密筒夹
INDEX52#	177E德国特劳普, 伍将. . . . .	Φ58.0	94	Φ52.0	精密筒夹
INDEX60#	185E德国特劳普. . . . .	Φ66.0	110	Φ60.0	精密筒夹
INDEX80#	193E德国特劳普. . . . .	Φ90.0	130	Φ80.0	精密筒夹
利高65#	利高. . . . .	Φ72.0	142	Φ65.0	精密筒夹
C-32#	缙鋸, 洽群. . . . .	Φ40.0	104	Φ33.0	精密筒夹
C-44#	缙鋸, 朝乾. . . . .	Φ54.0	87	Φ45.0	精密筒夹
王主20#	王主. . . . .	Φ28.0	82	Φ20.0	精密筒夹
SD-25#	昇岱, 洽群. . . . .	Φ34.0	82	Φ25.0	精密筒夹
SD-32#	昇岱, 洽群. . . . .	Φ42.0	95	Φ32.0	精密筒夹
SD-45#	昇岱. . . . .	Φ56.0	120	Φ45.0	精密筒夹
SD-52#	昇岱. . . . .	Φ61.0	120	Φ52.0	精密筒夹

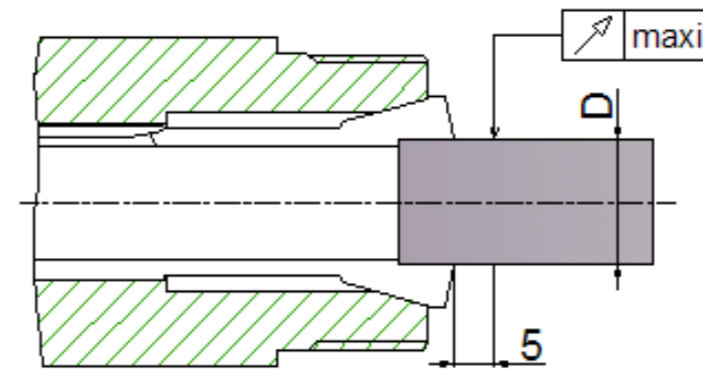




4. 磨刀机精度  
Pull-type collets precision



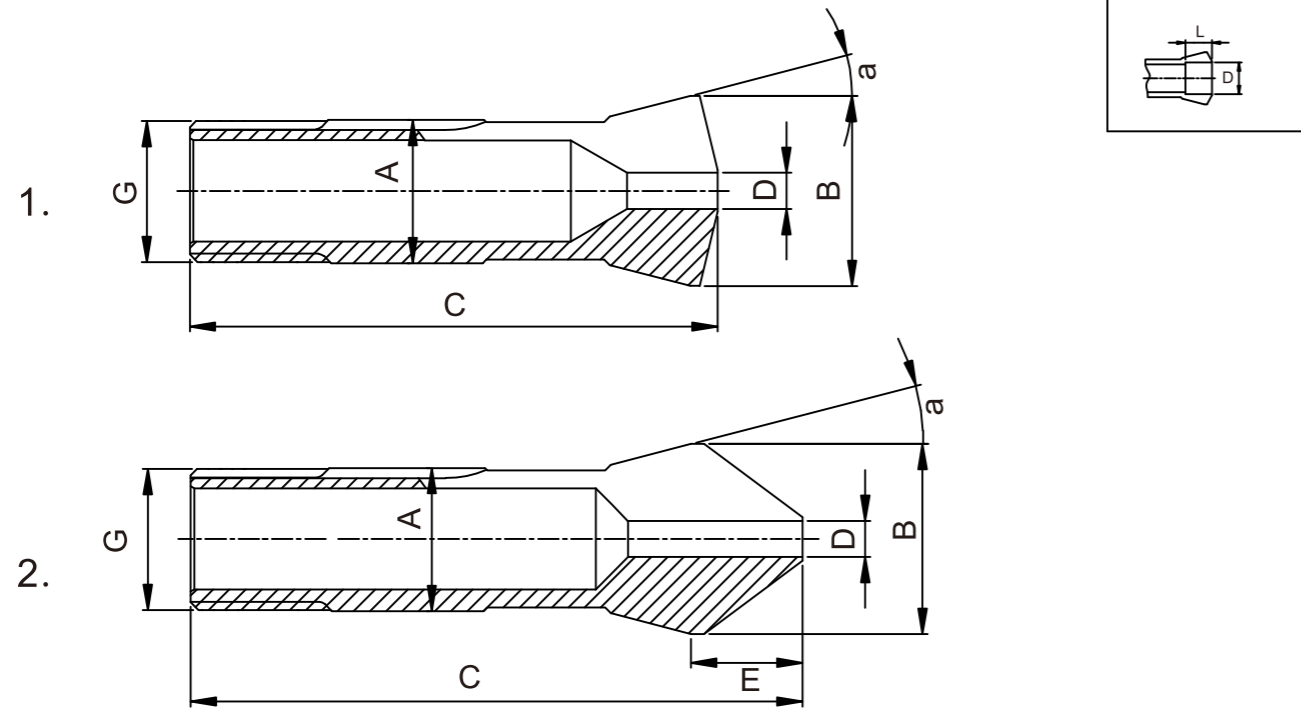
通孔  
Through bore



台阶孔  
Step bore

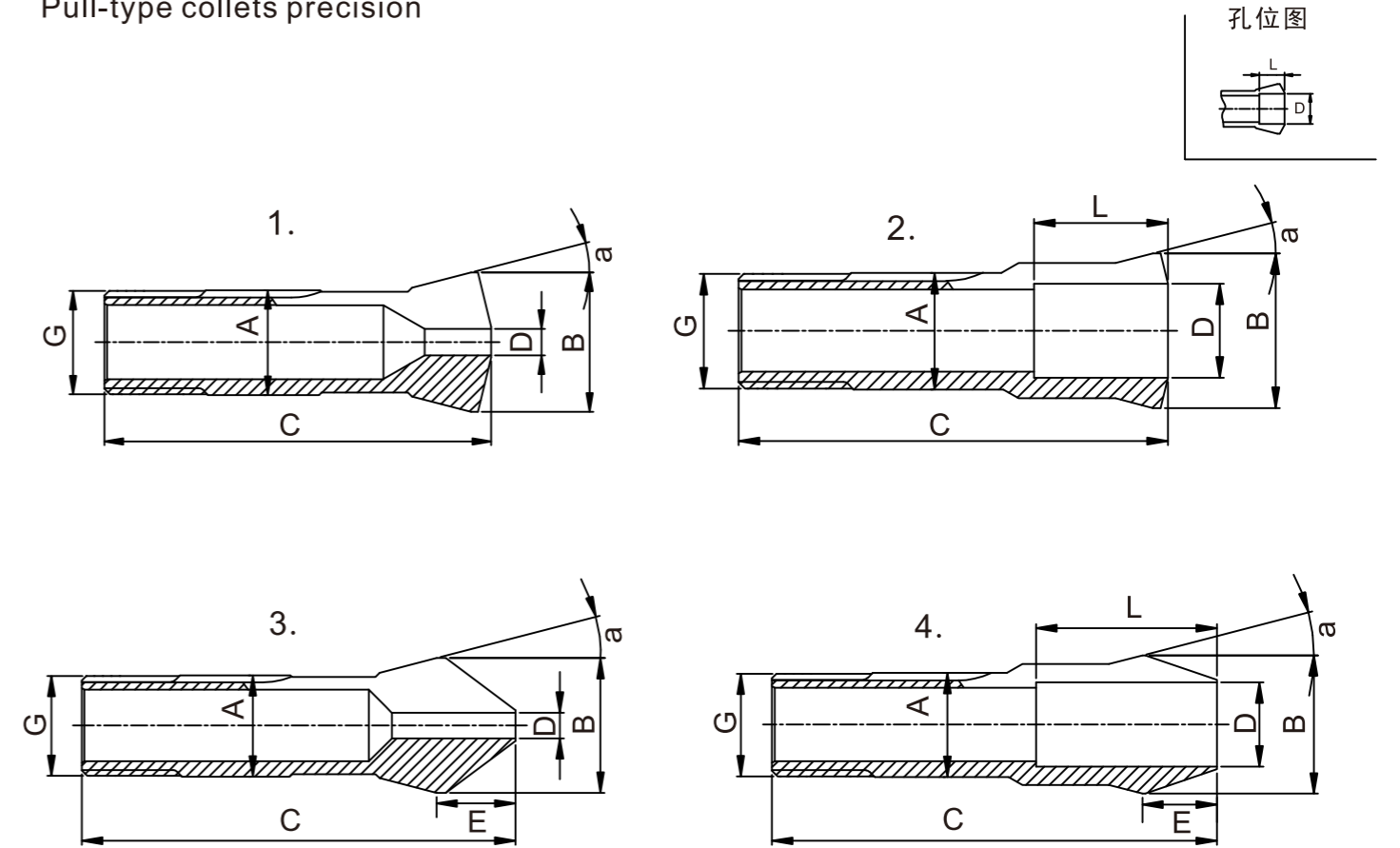
D		L	最大跳动 (标准级) Maxi(standard)	最大跳动 (精密级) Maxi UP(Highest precision)
>	≤			
	0.5	1	0.010	—
0.5	1	3	0.010	0.005
1	1.6	6	0.010	0.005
1.6	3	10	0.015	0.008
3	6	16	0.015	0.008
6	10	25	0.015	0.008
10	18	40	0.020	0.010
18	24	50	0.020	0.010
24	31	60	0.020	0.010

4. 磨刀机夹头  
Pull-type collets



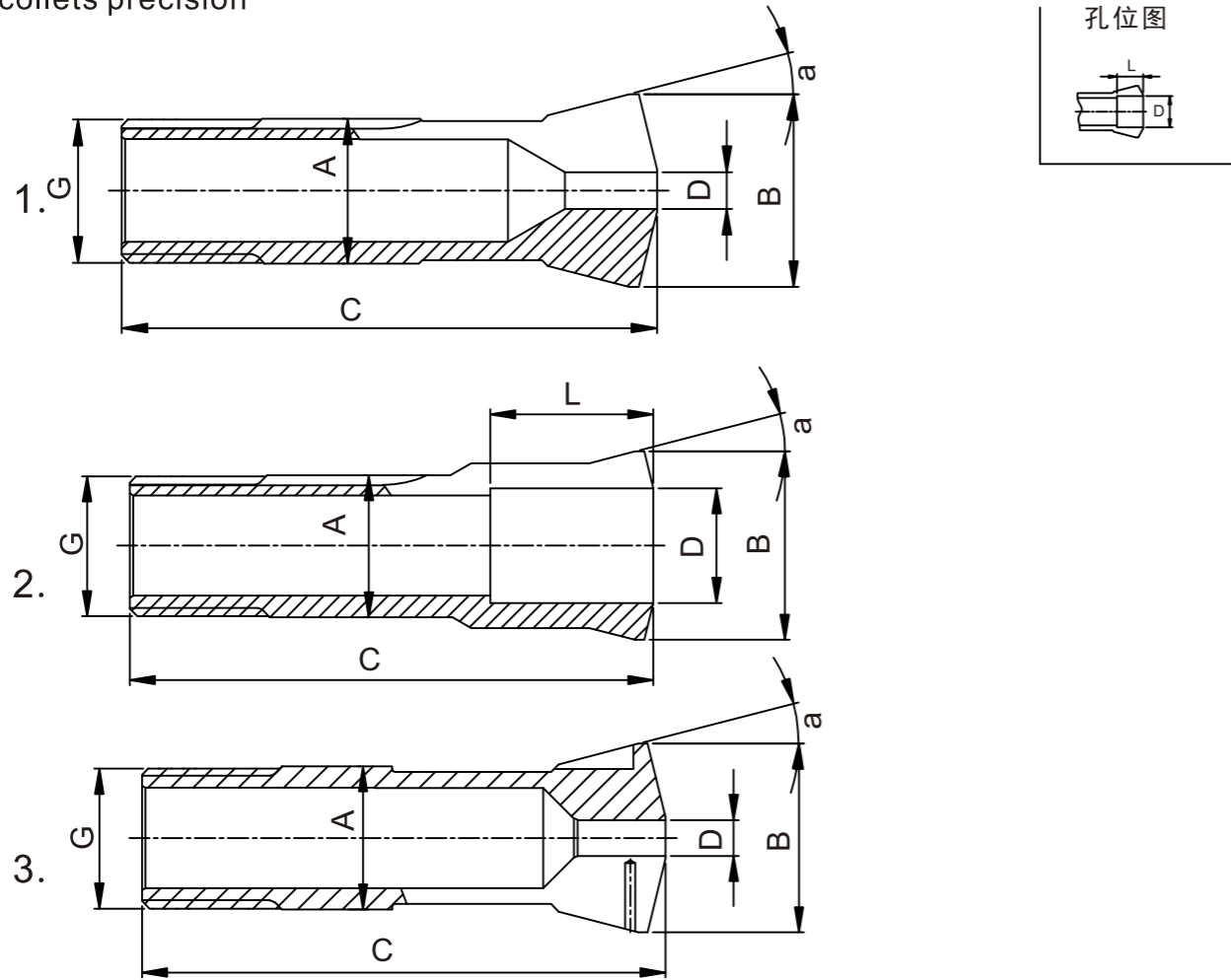
型号 Model	编号 Number	A	B	C	G	E	a	图 Fig	L	D min.-max. Ø
W10	80-00001	10	14	43.6	$\varnothing 9.83 \times 0.833 \angle 45^\circ/5^\circ$	-	15°	1	-	0.30 ... 6.70
									15	6.71 ... 8.00
									6	8.01 ... 8.50
									5	8.51 ... 9.00
									4	9.01 ... 9.50
									3	9.51 ... 10.00
W12	80-00002	12	16	46	$\varnothing 11.75 \times 1.25 \angle 45^\circ/5^\circ$	-	15°	1	-	0.30 ... 8.00
									17	8.01 ... 10.00
									6	10.01 ... 10.50
									5	10.51 ... 11.00
									4	11.01 ... 11.50
									3	11.51 ... 12.00
	80-93108	12	16	52	$\varnothing 11.75 \times 1.25 \angle 45^\circ/5^\circ$	8.8	15°	2	-	0.30 ... 8.00
									24	8.01 ... 10.00
W15	80-00003	15	20.2	58.3	$\varnothing 14.75 \times 1.25 \angle 45^\circ/5^\circ$	-	15°	1	-	0.30 ... 10.70
									22	10.71 ... 12.70
									9.5	12.71 ... 13.00
									8.5	13.01 ... 13.50
									7.5	13.51 ... 14.00
									6.5	14.01 ... 14.50
									5.5	14.51 ... 15.00
									4.5	15.01 ... 15.50
									3.5	15.51 ... 16.00
										80-93285
									32	10.21 ... 12.70

4. 磨刀机精度  
Pull-type collets precision

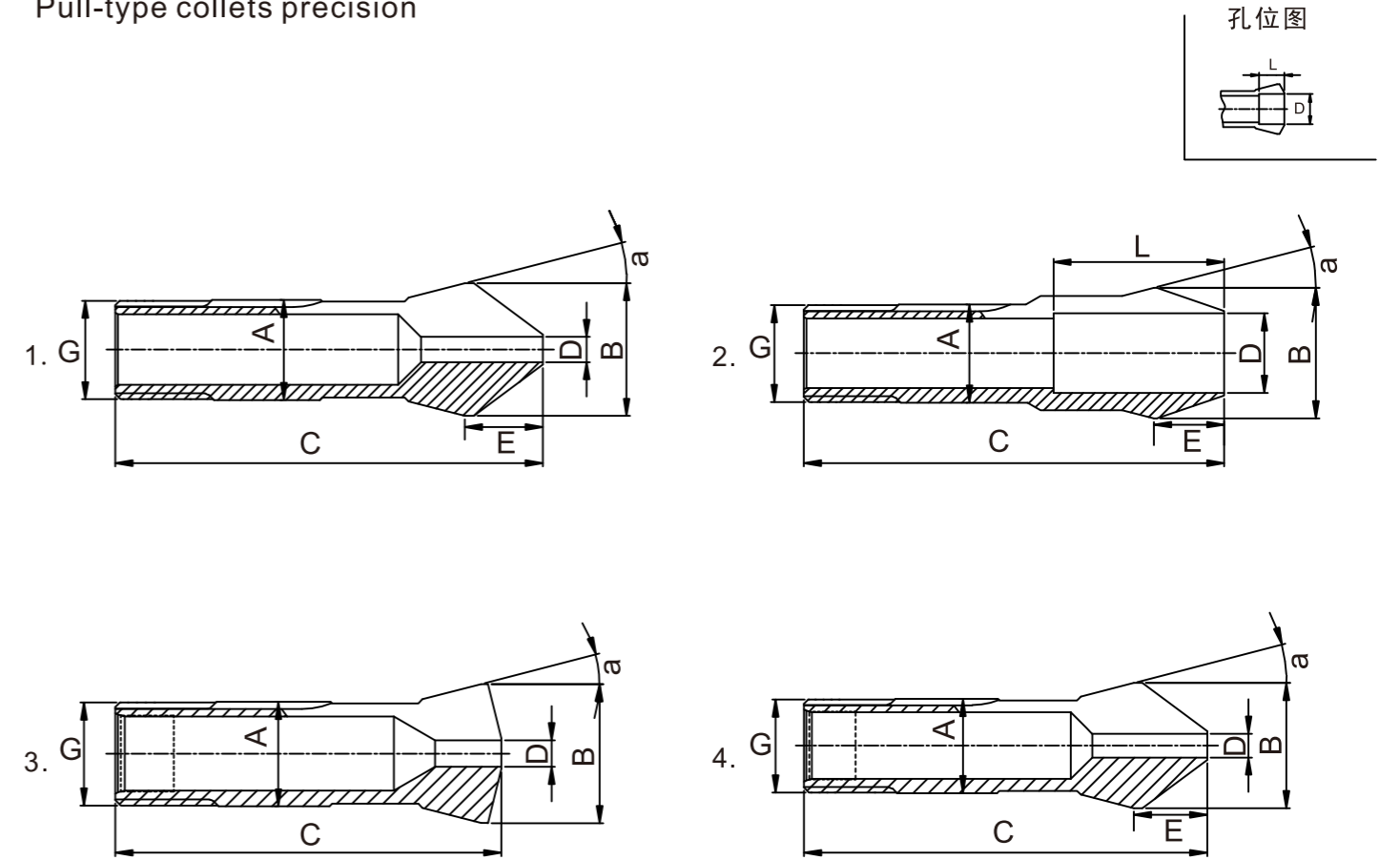


型号 Model	编号 Number	A	B	C	G	E	a	图 Fig	L	D min.-max. Ø
W20	80-00004	20	26.3	73	$\varnothing 19.7 \times 1.666 \angle 45^\circ/5^\circ$	-	15°	1	-	0.30 ... 14.50
									28	14.51 ... 16.00
									13.5	16.01 ... 16.50 (20)
									13	16.51 ... 17.00 (20)
									12.2	17.01 ... 17.50 (20)
									11.5	17.51 ... 18.00 (20)
									10.7	18.01 ... 18.50 (20)
									10	18.51 ... 19.00 (20)
									8.7	19.01 ... 19.50 (20)
									7.5	19.51 ... 20.00 (20)
									6.5	20.01 ... 20.50 (20)
									5.5	20.51 ... 21.00 (20)
									4.7	21.01 ... 21.50 (20)
									4	21.51 ... 22.00 (20)
									3	22.01 ... 22.50 (20)
									2	22.51 ... 23.00 (20)
	80-00107							2	24	16.01 ... 20.00
	80-92744	20	26.3	84.5	$\varnothing 19.7 \times 1.666 \angle 45^\circ/5^\circ$	15.5	15°	3	-	0.30 ... 13.00
									41	13.01 ... 16.00
	80-93286							4	37	16.01 ... 20.00
	80-93828							3	-	Morse DIN228MK-1
	80-93829	20	26.3	94.5	$\varnothing 19.7 \times 1.666 \angle 45^\circ/5^\circ$	25.5	15°	4	66	Morse DIN228MK-2

4. 磨刀机精度  
Pull-type collets precision



4. 磨刀机精度  
Pull-type collets precision

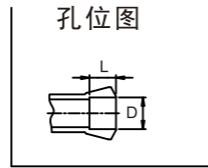
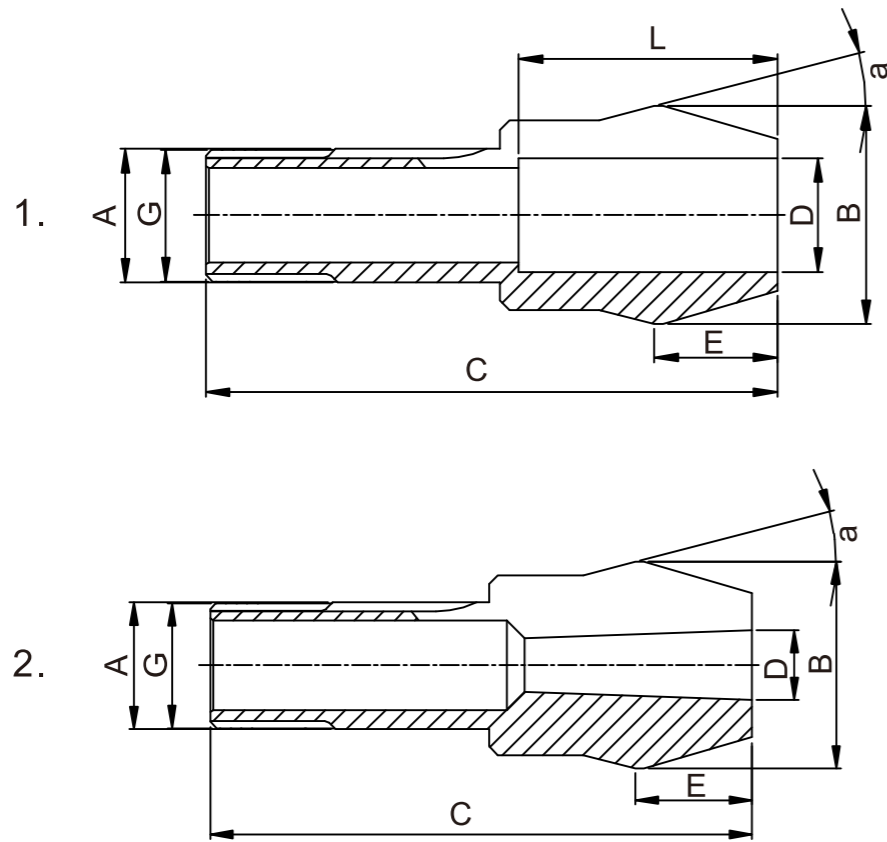


型号 Model	编号 Numbr	A	B	C	G	E	a	图 Fig	L	D min.- max. $\varnothing$
W25	80-00005	25	33.7	97.6	$\varnothing$ 24.7 x 15f" $\angle$ 45°/5°	-	15°	1	-	0.30 ... 19.05
									35	19.06 ... 21.00
									16.5	21.01 ... 21.50 21)
									16	21.51 ... 22.00 21)
									15.5	22.01 ... 23.00 21)
									15	23.01 ... 23.50 21)
									14.5	23.51 ... 24.00 21)
									13.5	24.01 ... 24.50 21)
									12.5	24.51 ... 25.00 21)
									11.5	25.01 ... 25.50 21)
									10.5	25.51 ... 26.00 21)
									9.5	26.01 ... 26.50 21)
									8.5	26.51 ... 27.00 21)
									7.5	27.01 ... 27.50 21)
									6.5	27.51 ... 28.00 21)
									5.5	28.01 ... 28.50 21)
									4.5	28.51 ... 29.00 21)
80-00700							2	30	21.01 ... 25.40	
80-01923	25	35	94		M25 x1	-	16°	3	-	0.50 ... 17.00

型号 Model	编号 Number	A	B	C	G	E	a	图 Fig	L	D min.- max. $\varnothing$	
W25	80-92872	25	33.7	112.2	$\varnothing$ 24.7 x 15f" $\angle$ 45°/5°	19.7	15°	1	-	0.30 ... 19.05	
									50	19.06 ... 21.00	
									2	47	21.01 ... 25.40
									1	-	Morse DIN228MK-1
									1	-	Morse DIN228MK-2
W31.75	80-00842	31.75	37.4	87	$\varnothing$ 31.4 x 20f" $\angle$ 60°	-	10'3"	3	-	0.50 ... 25.19	
									40	25.20 ... 27.99	
									10	28.00 ... 28.99	
									7	29.00 ... 29.99	
									4	30.00 ... 31.00	
W31.75	80-02007	31.75	37.4	108.7	$\varnothing$ 31.4 x 20f" $\angle$ 60°	25.4	10'3"	4	-	0.30 ... 25.19	
									64	25.20 ... 28.00	

4. 磨刀机精度

Pull-type collets precision



型号 Model	编号 Number	A	B	C	E	G	a	图 Fig	L	D min.-max. $\varnothing$
B 32/45	72-2005	32	53	148.5	32.5	$\varnothing 29.7 \times 1.693 \angle 45^\circ/5^\circ$	15°	1	-	1.00 ... 24.00
									80	24.01 ... 40.00
	72-93409	32	53	148.5	32.5	$\varnothing 29.7 \times 1.693 \angle 45^\circ/5^\circ$	15°	2	-	Morse DIN228MK-1 26)
	72-93410	32	53	148.5	32.5	$\varnothing 29.7 \times 1.693 \angle 45^\circ/5^\circ$	15°	2	-	Morse DIN228MK-2 26)
	72-93411	32	53	148.5	32.5	$\varnothing 29.7 \times 1.693 \angle 45^\circ/5^\circ$	15°	2	-	Morse DIN228MK-3 26)
	72-93412	32	53	173	57	$\varnothing 29.7 \times 1.693 \angle 45^\circ/5^\circ$	15°	2	107	Morse DIN228MK-4 26)

4. 机床厂家品牌

The brand of machine

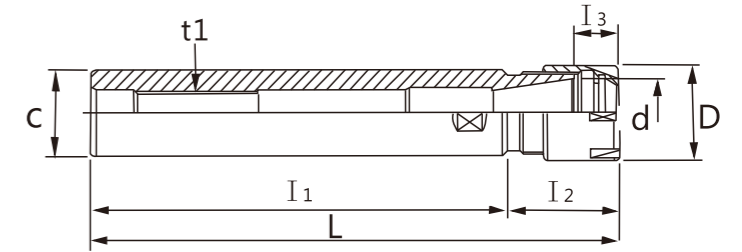
机床厂家品牌 The brand of machine	型号 model	产品编号 Product number					
Walter	B32/45, W20, W25	72-02005, 80-92744,	80-00004, 80-92872,	80-00005, 80-93286	80-00107,	80-00700,	80-02006,
Agathon	B8, B15, W15, W20, W25	72-00137, 80-00700,	72-00139, 80-02006,	80-00003, 80-92744,	80-00004, 80-92872,	80-00005, 80-93285,	80-000107, 80-93286
Anca	B32/45, W20, W25	72-02005, 80-02006,	80-00004, 80-92744,	80-00005, 80-92872,	80-000107, 80-93286	80-00700,	80-00842,
Cincinnati	W20	80-00004,	80-00107,	80-92744,	80-93286		
Christen	F8, P4.5, W20	76-00577,	78-00153,	80-00004,	80-00107,	80-92744	
Dubied	B8, W20	72-00137,	80-00004,	80-00107,	80-92744,	80-93286	
Ewag	W12, W15, W20, W25 W31.75	80-00002, 80-00842, 80-93286	80-00003, 80-02006,	80-00004, 80-02007,	80-00005, 80-92744,	80-00107, 80-92872,	80-00700, 80-93108,
Hydromat	HB32, HB45, HB32/45 HW20, HW25	72-02010,	72-02036,	72-02033,	80-02030,	80-02010	
Jones & shipman	W20, W25	80-00004, 80-92872,	80-00005, 80-93286	80-00107,	80-00700,	80-02006,	80-92744,
Junker Erwin	W20, W25	80-00004, 80-92872,	80-00005, 80-93286	80-00107,	80-00700,	80-02006,	80-92744,
Normac	W20, W25	80-00004, 80-92872,	80-00005, 80-93286	80-00107,	80-00700,	80-02006,	80-92744,
Overbeck	B15	72-00139					
Rollomatic-Landromatic	B8, F8, W15, W20 W25	72-00137, 80-02006,	76-00577, 80-00700,	80-00003, 80-92744,	80-00004, 80-92872,	80-00005, 80-93285,	80-00107, 80-93286
Safag	B8, F4.5, F12, P10, W12, W15, W20, W25	72-00137, 80-00004, 80-92872,	76-00076, 80-00005, 80-93285,	76-00078, 80-00107, 80-93286	78-00228, 80-00700,	80-00002, 80-02006,	80-00003, 80-92744,
Sallaz	B8, W20	72-00137,	80-00004,	80-00107,	80-92744,	80-93286	
Schneeberger	B32/45, ISO40, W20	72-02005,	74-00309,	80-00004,	80-00107,	80-92744	
Spinner	L20, W25	77-00122,	80-00005,	80-00700,	80-02006,	80-92872	
Strausak	B32/45, BCR32, W20	72-02005,	72-93235,	80-00004,	80-00107,	80-92744,	80-93286
Stream	W20	80-00004,	80-00107,	80-92744,	80-93286		
Viking	W25	80-00005,	80-00700,	80-02006,	80-92872		

### 5. 送料机夹头 Feeding machine collet



冠通 (FEDEK)、富豪	冠通 (FEDEK)、富豪中轴	中义 (IEMCA)、错锣中轴套
4# (0.8-4mm)	7#中轴套	SN16#中轴套
7#(1.3-7mm)	7#中轴套 (原厂)	SN19#中轴套
15#(1.5-8.5mm)	15#中轴套	SN20#中轴套
15#加大 (2-10.5mm)	15#中轴套 (培林)	SN23#中轴套
15#特大 (11-13mm)	15#中轴套 (旧型)	SN25#中轴套
20# (3-12.7mm)	15#中轴套 (新型)	SN32#中轴套
20#加大 (11.5-18mm)	15#中轴套D12mm	日本育良中轴
20#特大 (18.5-22mm)	SN20#中轴套	7# (M6*1)
STM326 (18-21mm)	SN23#中轴套	8# (M6*1)
STM326 (21.5-23.5mm)	SN25#中轴套	10# (M6*1)
STM326 (24-26mm)	SN32#中轴套	12# (M6*1)
32#普通 (8-17.5mm)	SN42#中轴套	15# (打 PIN)
32#普通 (18-26mm)	中意、错锣料夹	20# (打 PIN)
32#普通 (26.5-29.5mm)	4# (0.8-4mm)	25# (打 PIN)
32#普通 (30-33mm)	4-7# (0.8-6mm)	32# (打 PIN)
32#普通 (33.5-36mm)	10# (1.5-8.5mm)	日本育良料夹 (BARTOP)
42# (3-23mm)	12# (3-10.8mm)	7# (外径 D=7)
42# (23.5-28mm)	15# (3-14mm)	8# (外径 D=8)
42# (28.5-38mm)	20# (3-16mm)	10# (外径 D=10)
42# (38.5-42.2mm)	25# (4-19mm)	12# (外径 D=12)
42# (4-29mm) 外径32mm	25# (19.5-23mm)	15# (外径 D=15)
42# (20-38mm) 外径40/41mm	32# (4-29mm) D=32	20# (外径 D=18/20)
42# (26.5-38mm) 外径42mm	中意、错锣中轴套	25# (外径 D=25)
51# (42.5-47mm)	SN10#中轴套	32# (外径 D=32)
	SN12#中轴套	

### 6. C/ER 直柄延长杆组 C/ER Straight shank collet chuck set



#### 特点

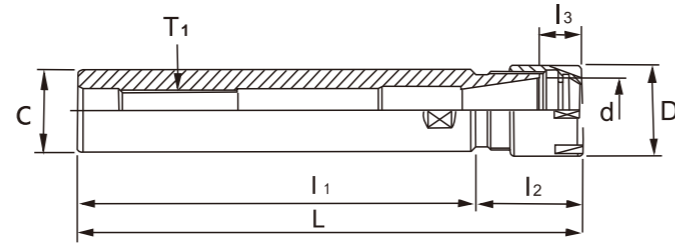
- 本体可指定削平, 适用于侧边锁固。(另外加价)
- 价格= (筒夹 X 数量) + 本体+扳手+包装盒固。
- 本价格以塑料盒计算, 指定木盒差额请外加。
- 套装小孔径筒夹不另外加价。

#### Features

- Flatten the body can be specified for the side locking.(Another increase).
- Whole set=(ER collet x Qty)+body+spanner+box.
- The prices calculated in plastic boxes, wooden balance please specify plus.
- Collets of small sizes in the whole set are not added price.

规格 Spec	内容物 Contents		重量 (KGS) Weight
	内附筒夹夹持能力 Collet		
C16 x ER16-50 x 9PCS			-
C16 x ER16-100 x 9PCS			-
C16 x ER16-150 x 9PCS	2-10 x 9只	Ø2, Ø3, Ø4, Ø5, Ø6, Ø7, Ø8, Ø9, Ø10,	-
C20 x ER16-50 x 9PCS			-
C20 x ER16-100 x 9PCS			-
C20 x ER16-150 x 9PCS			-
C20 x ER20-60 x 12PCS			-
C20 x ER20-120 x 12PCS	2-13 x12只	Ø2, Ø3, Ø4, Ø5, Ø6, Ø7, Ø8, Ø9, Ø10, Ø11, Ø12, Ø13,	-
C20 x ER20-180 x 12PCS			-
C20 x ER25-50 x 15PCS			-
C20 x ER25-100 x 15PCS	2-16 x15只	Ø2 ~ Ø16	2.50
C20 x ER32-50 x 6PCS			-
C20 x ER32-100 x 6PCS	6-20 x 6只	Ø6, Ø8, Ø10, Ø12, Ø16, Ø20,	-
C20 x ER32-50 x 18PCS			-
C20 x ER32-100 x 18PCS	3-20 x18只	Ø3 ~ Ø20	-
C25 x ER25-50 x 15PCS			-
C25 x ER25-100 x 15PCS	2-16 x15只	Ø2 ~ Ø16	-
C25 x ER32-50 x 6PCS			-
C25 x ER32-100 x 18PCS	6-20 x 6只	Ø6, Ø8, Ø10, Ø12, Ø16, Ø20,	-
C25 x ER40-50 x 7PCS			-
C25 x ER40-50 x 23PCS	4-26 x23只	Ø4 ~ Ø26	-
C32 x ER32-60 x 6PCS			-
C32 x ER32-60 x 18PCS	6-20 x 6只	Ø6, Ø8, Ø10, Ø12, Ø16, Ø20,	-
C32 x ER40-50 x 7PCS	3-20 x18只	Ø3 ~ Ø20	-
C32 x ER40-50 x 23PCS	6-25 x 7只	Ø6, Ø8, Ø10, Ø12, Ø16, Ø20, Ø25,	-
C32 x ER40-50 x 23PCS	4-26 x23只	Ø4 ~ Ø26	-

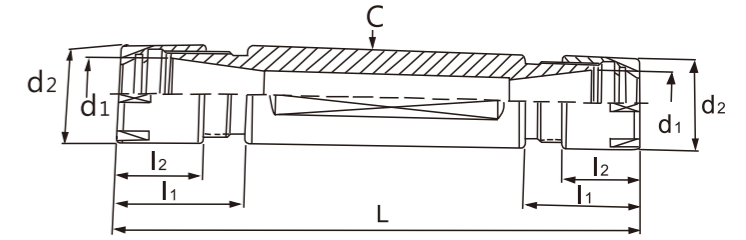
6. ER单头延长杆 (M小径螺帽)  
ER Single extension rod (M style NUT)



- 本款材质使用抗震能力优越的镍铬钼合金钢  
The material is Ni Cr Mo alloy steel that has superior aseismatic capacity

规格 (Version)	$l_1$	L	$l_2$	$l_3$	D	$T_1$
C8×ER8M-55		79	24	6	12	M4×0.7P
C10×ER8M-100		117	17			
C10×ER8M-150		167				
C10×ER8M-180		197				
C12×ER8M-55		72				
C12×ER8M-120		137				
C12×ER8M-180		197				
C12×ER11M-80		96.6	16.6	6.6	0.6	M5×0.8P
C16×ER11M-50		66.6				
C16×ER11M-100		116.6				
C16×ER11M-140		156.6				
C16×ER16M-80		117	25	10.6	22	M10×1.5P
C20×ER16M-100		125				
C20×ER16M-140		165				
C20×ER16M-160		185				
C20×ER20M-60		100	40	11.5	28	M12×1.75P
C20×ER20M-100		140				
C20×ER20M-120		160				
C20×ER20M-150		190				
C20×ER20M-180		220				
C25×ER20M-140		168				
C20×ER25M-100		150	50	12	35	

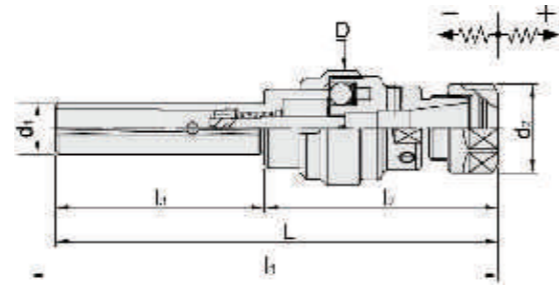
6. 直柄ER双头延长杆  
Straight Shank Double ER ended rod



- 内孔同心偏摆精度: 0.005mm (刀具寿命更佳节省);
  - 柄径公差: -0.005~0.008mm (使用操作效率高);
  - 双头型使用于“退后加工机种”, 复合多功能加工用途;
  - 适用于各式CNC车床;
  - 选用弹性筒夹可选用三种精度: 普通级0.015mm, A级0.01mm, UP级0.005mm;
  - 选用刚性攻牙筒夹与机床控制机能搭配, 可直接刚性攻牙加工;
  - 选用伸缩攻牙筒夹与机床控制机能搭配, 可直接柔性攻牙加工;
  - C20适用于相符合于瑞士机型 “TAKMAZ、CITIZEN、MIYANO” 品牌;
  - C22适用于相符合于瑞士机型 “STAR” 品牌;
  - C23用于相符合于瑞士机型 “NOMURA” 品牌。
- The concentricity of the internal hole is 0.005mm, which extends tool life.
  - The tolerance of the chuck's diameter is -0.005-0.008mm with high operation efficiency.
  - Double head style is suitable for automatic lathe and multi-purposed processing.
  - Suitable for all kinds of CNC lathes.
  - Compatible with three kinds of ER collets-0.015mm (Class standard), 0.01mm (Class A) and 0.005mm (Class UP), which are graded by their precision.
  - Compatible with ER-TC RIGID TAP COLLETS and control machinery for rigid tap processing.
  - Compatible with FLOATING TAP COLLETS and control machinery for soft tap processing.
  - TYPE C20 is suitable for the brand, TAKAMAZ CITIZEN MIYANO, conforming to SWISS MODEL.
  - TYPE C22 is suitable for the brand, STAR, conforming to SWISS MODEL.
  - TYPE C23 is suitable for the brand, NOMURA, conforming to the SWISS MODEL.

规格 (Version)	L	$l_2$	$l_3$	D	$d_1$	$d_2$	重量 (KG)
DE20×ER11M-50T	83.2	16.6	12	20	11	16	0.12
DE20×ER11M-75T	108.2						0.12
DE20×ER16M-50T	103.2	26.6	18		16	22	0.10
DE20×ER16M-75T	128.2						0.12
DE22×ER11M-100T	133.2	16.6	12	22	11	16	0.14
DE22×ER16M-100T	153.2	26.6	18				16
DE23×ER11M-100T	133.2	16.6	12	23	11	16	0.18
DE23×ER16M-100T	153.2	26.6	18				16

## 6.ER 直柄伸缩攻牙器 (CNC车床专用) ER Tapper (For cnc lathe)



### 特点

- 使用ER筒夹扶持螺丝攻, 配合钢性攻牙筒夹则效果倍增。
- 建议使用HSP螺帽, 以增加夹持力。
- TP型内建浮动装置使工作重复定位可自动修复偏差。
- STP型仅可伸缩作用, 适合于钢性攻牙。
- 用于刀具不旋转的场合 (如: 车床、专用机械等)。
- 内附产品使用说明书。

### Features

- For use in ER Collet to hold Taps, the range of holding is 1 min. It's able to hold taps in any kind of shanks.
- The body was made of SCM-21 steel, tightening screw has been precision ground.
- Design of telescopic ability, can be weed out overdo at the same time with main spindle trun in reverse and table fall back, protected workpiece and tap against break.
- Floating assembly, can be automatic to correct deviation of too fast or too slow speed.

### 注释

- 在加工材料较硬, 则m/min应同时变得较慢。
- 在使用直柄伸缩ER攻牙器, 请先决定车床主轴运转速度, 否则将会因速度太快或太慢而造成柄及攻牙器损坏或破碎。
- $S=V/P$  S=中文主轴转速 V=m/min P=Pitch

### Note

- If the processing material is harder, the m/min should become slower relatively.
- Before using the Straight ER Tapper, please decide spindle running speed of Lathe Machine, otherwise it will make the Shank and Tapping break or split because of too slow speed.
- $S=V/P$  S=Spindle running speed V=m/min P=Pitch

### 范例

- 工件材料: S45C, V=400~440
- 牙距=1.5P
- $S=V/P=440/1.5=293\text{rpm}$

### For Example

- Processing material: S45C, V=400~440.
- Pitch=1.5P
- $S=V/P=440/1.5=293\text{rpm}$

L	d1	筒夹 Collet	攻牙能力 Capacity	伸缩量		重量 (KGS) Weight
				伸 (+)	缩 (-)	
159	20	ER20	M3~M16	8mm	5mm	0.50
174.5	32	ER32	M3~M27	10mm		1.60
165	MT3	ER20	M3~M16	-	-	1.40
	MT4					1.60
203.5	MT4	ER32	M3~M27	-	-	1.80

## 6.ERA 级弹性筒夹套装组 ER A Grade collet set



### 特点

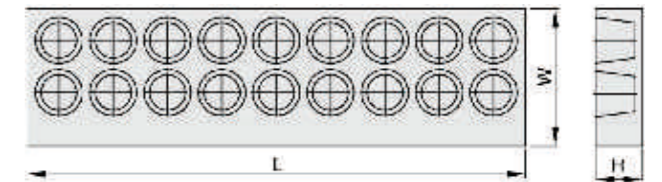
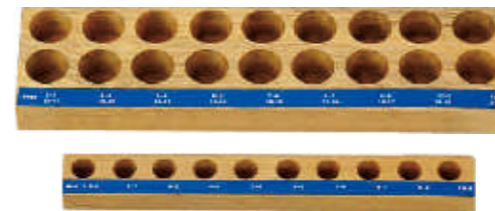
- 表面粗糙度RA 0.25, 提升刀杆与螺帽贴合度, 增强稳定性。
- 表面特殊处理, 具较佳防锈功能, 延长使用寿命。
- 夹持精度: 0.01mm内。
- 夹持力提升15%

### Features

- Surface roughness Ea 0.25, improves the fitness between chuck and nut and increases the stabilities.
- Special surface treatment provides a better rust-proofing and extend the life cycle.
- Clamping accuracy is within 0.01mm.
- Clamping force improved up by 15%.

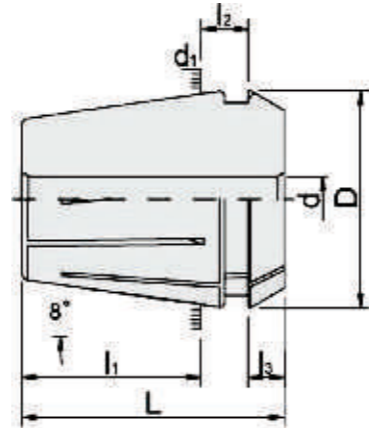
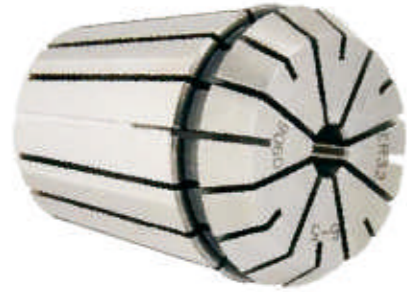
规格 Spec	内容物 Contents		重量 (KGS) Weight
	筒夹 Collet Size	数量 Qty	
ER16 - A - 6P - SET	1, 2, 4, 6, 8, 10,	1	-
ER20 - A - 6P - SET	2, 4, 6, 8, 10, 12		-
ER16 - A - 10P - SET	1, 2, 3, 4, 5, 6, 7, 8, 9, 10,		-
ER20 - A - 12P - SET	2, 3, 4, 5, 6, 7, 8, 9, 10, 11, 12, 13		-

## ER 筒夹木盘 ER COLLET WOODEN TRAYS



规格 Spec	L	W	H	数量(孔) Qty	重量 (KGS) Weight
ER 8 - MV	210	20	13	9	0.01
ER 11 - MV				13	0.01
ER 16 - MV	275	35	22	10	0.14
ER 20 - MV				12	0.12
ER 25 - MV	340	77	26	16	0.18
ER 32 - MV				18	0.48
ER 40 - MV	265	90	30	24	0.76
ER 50 - MV				12	0.64

## 6.C/ER 弹性筒夹 C/ER Collet



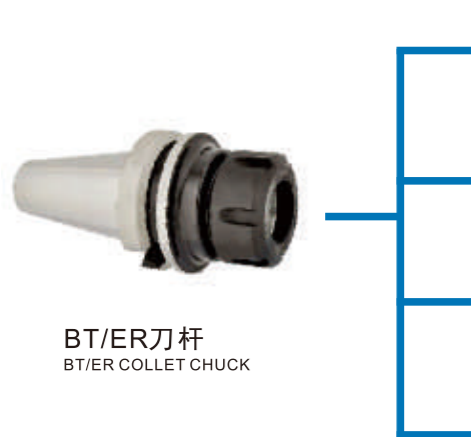
### 特点

- 材质: SUJ2. (高碳轴承钢: 在热处理后, 具有坚韧的硬度与韧性, 更好的耐磨耗性, 且弹性佳使用寿命更长)。
- 硬度: HRC46°
- 表面粗糙度RZ2.5以内。
- ER8的夹持范围为0.5mm; ER11、16、20、25、32、40的夹持范围为1mm, 但孔径2.5mm以下, 夹持范围为0.5mm。
- 同心度按DIN标准规范全数检验, 共计有三种精度等级, 普通级: 0.02mm、A级0.01mm及UP级0.005mm。
- UP级建议配合HSP螺帽使用, 其稳定性更好。
- 用于夹持钻头、螺丝攻、铣刀、铰刀等工具。
- 具有弹性伸缩的功能、应用范围广、附变化性。
- 订购时请告知所需精度等级。

### Features

- Steel: SUJ2 (High-carbon bearing steel: After heat treatment, it has hardness and toughness, better grinding quality, good flexibility, and longer using life span.)
- HRC46°
- Surface roughness: within RZ2.5
- Chucking range: ER8=0.5mm; ER11、16、20、25、32、40=1mm. But if the internal hole is less than 2.5mm, the chucking range will be 0.5mm.
- The concentricity is totally examined according to DIN norm. There are three kinds of classes for precision: general class 0.02mm, A class 0.01mm, and up class 0.005mm.
- UP class is recommended to be used with HSP clamping nut. It will have better stability.
- It is used for the cutting tools like drills, taps, mills, and reamers, etc.
- It has flexibility and can be applied widely and variably.
- Please inform the required precision when ordering.

规格 Spec	规尺寸范围 Size Range	L	l <sub>1</sub>	l <sub>2</sub>	l <sub>3</sub>	D	d <sub>1</sub>	d <sub>2</sub>	重量 (KGS) Weight
ER 8	1~5.0	13.5	10.8	2.98	1.5	8.5	8	6.5	0.01
ER 11	1~7.0	18	13.5	3.8	2.5	11.5	11	9.5	0.01
ER 16	1~10.0	27.5	20.8	6.26	4	17	16	13.8	0.03
ER 20	2~13.0	31.5	23.9	6.36	4.8	21	20	17.4	0.04
ER 25	2~16.0	34	25.9	6.66	5	26	25	22	0.06
ER 32	3~20.0	40	30.9	7.16	5.5	33	32	29.2	0.10
ER 40	4~26.0	46	34.9	7.66	7	41	40	36.2	0.25
ER 50	6~34.0	60	46	13.4	8.5	52	50	46	0.45



## 6.ER 普通级弹性筒夹 ER Ordinary grade collet

### ER8

规格 Spec	夹持范围 Range	精度等级 Precision
ER8 - 1	1 ~ 0.5	0.02
ER8 - 1.5	1.5 ~ 1	
ER8 - 2	2 ~ 1.5	
ER8 - 2.5	2.5 ~ 2	
ER8 - 3	3 ~ 2.5	
ER8 - 3.5	3.5 ~ 3	
ER8 - 4	4 ~ 3.5	
ER8 - 4.5	4.5 ~ 4	
ER8 - 5	5 ~ 4.5	

### ER11

规格 Spec	夹持范围 Range	精度等级 Precision
ER11 - 1	1 ~ 0.5	0.02
ER11 - 1.5	1.5 ~ 1	
ER11 - 2	2 ~ 1.5	
ER11 - 2.5	2.5 ~ 2	
ER11 - 3	3 ~ 2	
ER11 - 3.5	3.5 ~ 2.5	
ER11 - 4	4 ~ 3	
ER11 - 4.5	4.5 ~ 3.5	
ER11 - 5	5 ~ 4	
ER11 - 5.5	5.5 ~ 4.5	
ER11 - 6	6 ~ 5	
ER11 - 6.5	6.5 ~ 5.5	
ER11 - 7	7 ~ 6	

### ER16

规格 Spec	夹持范围 Range	精度等级 Precision
ER16 - 1	1 ~ 0.5	0.02
ER16 - 1.5	1.5 ~ 1	
ER16 - 2	2 ~ 1.5	
ER16 - 2.5	2.5 ~ 2	
ER16 - 3	3 ~ 2	
ER16 - 3.5	3.5 ~ 2.5	
ER16 - 4	4 ~ 3	
ER16 - 4.5	4.5 ~ 3.5	
ER16 - 5	5 ~ 4	
ER16 - 5.5	5.5 ~ 4.5	
ER16 - 6	6 ~ 5	
ER16 - 6.5	6.5 ~ 5.5	

### ER16

规格 Spec	夹持范围 Range	精度等级 Precision
ER16 - 7	7 ~ 6	0.02
ER16 - 7.5	7.5 ~ 6.5	
ER16 - 8	8 ~ 7	
ER16 - 8.5	8.5 ~ 7.5	
ER16 - 9	9 ~ 8	
ER16 - 9.5	9.5 ~ 8.5	
ER16 - 10	10 ~ 9	

### ER20

规格 Spec	夹持范围 Range	精度等级 Precision
ER20 - 1	1 ~ 0.5	0.02
ER20 - 1.5	1.5 ~ 1	
ER20 - 2	2 ~ 1.5	
ER20 - 2.5	2.5 ~ 2	
ER20 - 3	3 ~ 2	
ER20 - 3.5	3.5 ~ 2.5	
ER20 - 4	4 ~ 3	
ER20 - 4.5	4.5 ~ 3.5	
ER20 - 5	5 ~ 4	
ER20 - 5.5	5.5 ~ 4.5	
ER20 - 6	6 ~ 5	
ER20 - 6.5	6.5 ~ 5.5	
ER20 - 7	7 ~ 6	
ER20 - 7.5	7.5 ~ 6.5	
ER20 - 8	8 ~ 7	
ER20 - 8.5	8.5 ~ 7.5	
ER20 - 9	9 ~ 8	
ER20 - 9.5	9.5 ~ 8.5	
ER20 - 10	10 ~ 9	
ER20 - 10.5	10.5 ~ 9.5	
ER20 - 11	11 ~ 10	
ER20 - 11.5	11.5 ~ 10.5	
ER20 - 12	12 ~ 11	
ER20 - 12.5	12.5 ~ 11.5	
ER20 - 13	13 ~ 12	

### ER25

规格 Spec	夹持范围 Range	精度等级 Precision
ER25 - 1	1 ~ 0.5	0.02
ER25 - 1.5	1.5 ~ 1	

### ER25

规格 Spec	夹持范围 Range	精度等级 Precision
ER25 - 2	2 ~ 1.5	0.02
ER25 - 2.5	2.5 ~ 2	
ER25 - 3	3 ~ 2	
ER25 - 3.5	3.5 ~ 2.5	
ER25 - 4	4 ~ 3	
ER25 - 4.5	4.5 ~ 3.5	
ER25 - 5	5 ~ 4	
ER25 - 5.5	5.5 ~ 4.5	
ER25 - 6	6 ~ 5	
ER25 - 6.5	6.5 ~ 5.5	
ER25 - 7	7 ~ 6	
ER25 - 7.5	7.5 ~ 6.5	
ER25 - 8	8 ~ 7	
ER25 - 8.5	8.5 ~ 7.5	
ER25 - 9	9 ~ 8	
ER25 - 9.5	9.5 ~ 8.5	
ER25 - 10	10 ~ 9	
ER25 - 10.5	10.5 ~ 9.5	
ER25 - 11	11 ~ 10	
ER25 - 11.5	11.5 ~ 10.5	
ER25 - 12	12 ~ 11	
ER25 - 12.5	12.5 ~ 11.5	
ER25 - 13	13 ~ 12	
ER25 - 13.5	13.5 ~ 12.5	
ER25 - 14	14 ~ 13	
ER25 - 14.5	14.5 ~ 13.5	
ER25 - 15	15 ~ 14	
ER25 - 15.5	15.5 ~ 14.5	
ER25 - 16	16 ~ 15	

### ER32

规格 Spec	夹持范围 Range	精度等级 Precision
ER32 - 2	2 ~ 1.5	0.02
ER32 - 2.5	2.5 ~ 2	
ER32 - 3	3 ~ 2	
ER32 - 3.5	3.5 ~ 3	
ER32 - 4	4 ~ 3.5	
ER32 - 4.5	4.5 ~ 3.5	
ER32 - 5	5 ~ 4	



## 6.ER 普通级弹性筒夹 ER Ordinary grade collet

### ▶ER32

规格 Spec	夹持范围 Range	精度等级 Precision
ER32-5.5	5.5~4.5	0.02
ER32-6	6~5	
ER32-6.5	6.5~5.5	
ER32-7	7~6	
ER32-7.5	7.5~6.5	
ER32-8	8~7	
ER32-8.5	8.5~7.5	
ER32-9	9~8	
ER32-9.5	9.5~8.5	
ER32-10	10~9	
ER32-10.5	10.5~9.5	
ER32-11	11~10	
ER32-11.5	11.5~10.5	
ER32-12	12~11	
ER32-12.5	12.5~11.5	
ER32-13	13~12	
ER32-13.5	13.5~12.5	
ER32-14	14~13	
ER32-14.5	14.5~13.5	
ER32-15	15~14	
ER32-15.5	15.5~14.5	
ER32-16	16~15	
ER32-16.5	16.5~15.5	
ER32-17	17~16	
ER32-17.5	17.5~16.5	
ER32-18	18~17	
ER32-18.5	18.5~17.5	
ER32-19	19~18	
ER32-19.5	19.5~18.5	
ER32-20	20~19	

### ▶ER40

规格 Spec	夹持范围 Range	精度等级 Precision
ER40-3	3~2	0.02
ER40-3.5	3.5~2.5	
ER40-4	4~3	
ER40-4.5	4.5~3.5	
ER40-5	5~4	
ER40-5.5	5.5~4.5	

### ▶ER40

规格 Spec	夹持范围 Range	精度等级 Precision
ER40-6	6~5	0.02
ER40-6.5	6.5~5.5	
ER40-7	7~6	
ER40-7.5	7.5~6.5	
ER40-8	8~7	
ER40-8.5	8.5~7.5	
ER40-9	9~8	
ER40-9.5	9.5~8.5	
ER40-10	10~9	
ER40-10.5	10.5~9.5	
ER40-11	11~10	
ER40-11.5	11.5~10.5	
ER40-12	12~11	
ER40-12.5	12.5~11.5	
ER40-13	13~12	
ER40-13.5	13.5~12.5	
ER40-14	14~13	
ER40-14.5	14.5~13.5	
ER40-15	15~14	
ER40-15.5	15.5~14.5	
ER40-16	16~15	
ER40-16.5	16.5~15.5	
ER40-17	17~16	
ER40-17.5	17.5~16.5	
ER40-18	18~17	
ER40-18.5	18.5~17.5	
ER40-19	19~18	
ER40-19.5	19.5~18.5	
ER40-20	20~19	
ER40-20.5	20.5~19.5	
ER40-21	21~20	
ER40-21.5	21.5~20.5	
ER40-22	22~21	
ER40-22.5	22.5~21.5	
ER40-23	23~22	
ER40-23.5	23.5~22.5	
ER40-24	24~23	
ER40-24.5	24.5~23.5	
ER40-25	25~24	

### ▶ER40

规格 Spec	夹持范围 Range	精度等级 Precision
ER40-25.5	25.5~24.5	0.02
ER40-26	26~25	

### ▶ER50

规格 Spec	夹持范围 Range	精度等级 Precision
ER50-6	6~5	0.02
ER50-7	7~6	
ER50-8	8~7	
ER50-9	9~8	
ER50-10	10~9	
ER50-11	11~9	
ER50-12	12~10	
ER50-13	13~11	
ER50-14	14~12	
ER50-15	15~13	
ER50-16	16~14	
ER50-17	17~15	
ER50-18	18~16	
ER50-19	19~17	
ER50-20	20~18	
ER50-21	21~19	
ER50-22	22~20	
ER50-23	23~21	
ER50-24	24~22	
ER50-25	25~23	
ER50-26	26~24	
ER50-27	27~25	
ER50-28	28~26	
ER50-29	29~27	
ER50-30	30~28	
ER50-31	31~29	
ER50-32	32~30	
ER50-33	33~31	
ER50-34	34~32	

## 6.ER A 级弹性筒夹 ER A Grade collet

### ▶ER8-A

规格 Spec	夹持范围 Range	精度等级 Precision
ER8-1-A	1~0.5	0.01
ER8-1.5-A	1.5~1	
ER8-2-A	2~1.5	
ER8-2.5-A	2.5~2	
ER8-3-A	3~2.5	
ER8-3.5-A	3.5~3	
ER8-4-A	4~3.5	
ER8-4.5-A	4.5~4	
ER8-5-A	5~4.5	

### ▶ER11-A

规格 Spec	夹持范围 Range	精度等级 Precision
ER11-1-A	1~0.5	0.01
ER11-1.5-A	1.5~1	
ER11-2-A	2~1.5	
ER11-2.5-A	2.5~2	
ER11-3-A	3~2	
ER11-3.5-A	3.5~2.5	
ER11-4-A	4~3	
ER11-4.5-A	4.5~3.5	
ER11-5-A	5~4	
ER11-5.5-A	5.5~4.5	
ER11-6-A	6~5	
ER11-6.5-A	6.5~5.5	
ER11-7-A	7~6	

### ▶ER16-A

规格 Spec	夹持范围 Range	精度等级 Precision
ER16-1-A	1~0.5	0.01
ER16-1.5-A	1.5~1	
ER16-2-A	2~1.5	
ER16-2.5-A	2.5~2	
ER16-3-A	3~2	
ER16-3.5-A	3.5~2.5	
ER16-4-A	4~3	
ER16-4.5-A	4.5~3.5	
ER16-5-A	5~4	
ER16-5.5-A	5.5~4.5	
ER16-6-A	6~5	
ER16-6.5-A	6.5~5.5	

### ▶ER16-A

规格 Spec	夹持范围 Range	精度等级 Precision
ER16-7-A	7~6	0.01
ER16-7.5-A	7.5~6.5	
ER16-8-A	8~7	
ER16-8.5-A	8.5~7.5	
ER16-9-A	9~8	
ER16-9.5-A	9.5~8.5	
ER16-10-A	10~9	

### ▶ER20-A

规格 Spec	夹持范围 Range	精度等级 Precision
ER20-1-A	1~0.5	0.01
ER20-1.5-A	1.5~1	
ER20-2-A	2~1.5	
ER20-2.5-A	2.5~2	
ER20-3-A	3~2	
ER20-3.5-A	3.5~2.5	
ER20-4-A	4~3	
ER20-4.5-A	4.5~3.5	
ER20-5-A	5~4	
ER20-5.5-A	5.5~4.5	
ER20-6-A	6~5	
ER20-6.5-A	6.5~5.5	
ER20-7-A	7~6	
ER20-7.5-A	7.5~6.5	
ER20-8-A	8~7	
ER20-8.5-A	8.5~7.5	
ER20-9-A	9~8	
ER20-9.5-A	9.5~8.5	
ER20-10-A	10~9	
ER20-10.5-A	10.5~9.5	
ER20-11-A	11~10	
ER20-11.5-A	11.5~10.5	
ER20-12-A	12~11	
ER20-12.5-A	12.5~11.5	
ER20-13-A	13~12	

### ▶ER25-A

规格 Spec	夹持范围 Range	精度等级 Precision
ER25-1-A	1~0.5	0.01
ER25-1.5-A	1.5~1	

### ▶ER25-A

规格 Spec	夹持范围 Range	精度等级 Precision
ER25-2-A	2~1.5	0.01
ER25-2.5-A	2.5~2	
ER25-3-A	3~2	
ER25-3.5-A	3.5~2.5	
ER25-4-A	4~3	
ER25-4.5-A	4.5~3.5	
ER25-5-A	5~4	
ER25-5.5-A	5.5~4.5	
ER25-6-A	6~5	
ER25-6.5-A	6.5~5.5	
ER25-7-A	7~6	
ER25-7.5-A	7.5~6.5	
ER25-8-A	8~7	
ER25-8.5-A	8.5~7.5	
ER25-9-A	9~8	
ER25-9.5-A	9.5~8.5	
ER25-10-A	10~9	
ER25-10.5-A	10.5~9.5	
ER25-11-A	11~10	
ER25-11.5-A	11.5~10.5	
ER25-12-A	12~11	
ER25-12.5-A	12.5~11.5	
ER25-13-A	13~12	
ER25-13.5-A	13.5~12.5	
ER25-14-A	14~13	
ER25-14.5-A	14.5~13.5	
ER25-15-A	15~14	
ER25-15.5-A	15.5~14.5	
ER25-16-A	16~15	

### ▶ER32-A

规格 Spec	夹持范围 Range	精度等级 Precision
ER32-2-A	2~1.5	0.01
ER32-2.5-A	2.5~2	
ER32-3-A	3~2	
ER32-3.5-A	3.5~2.5	
ER32-4-A	4~3	
ER32-4.5-A	4.5~3.5	
ER32-5-A	5~4	

## 6.ER A 级弹性筒夹 ER A Grade collet

►ER32-A

规格 Spec	夹持范围 Range	精度等级 Precision
ER32-5.5-A	5.5 ~ 4.5	0.01
ER32-6-A	6 ~ 5	
ER32-6.5-A	6.5 ~ 5.5	
ER32-7-A	7 ~ 6	
ER32-7.5-A	7.5 ~ 6.5	
ER32-8-A	8 ~ 7	
ER32-8.5-A	8.5 ~ 7.5	
ER32-9-A	9 ~ 8	
ER32-9.5-A	9.5 ~ 8.5	
ER32-10-A	10 ~ 9	
ER32-10.5-A	10.5 ~ 9.5	
ER32-11-A	11 ~ 10	
ER32-11.5-A	11.5 ~ 10.5	
ER32-12-A	12 ~ 11	
ER32-12.5-A	12.5 ~ 11.5	
ER32-13-A	13 ~ 12	
ER32-13.5-A	13.5 ~ 12.5	
ER32-14-A	14 ~ 13	
ER32-14.5-A	14.5 ~ 13.5	
ER32-15-A	15 ~ 14	
ER32-15.5-A	15.5 ~ 14.5	
ER32-16-A	16 ~ 15	
ER32-16.5-A	16.5 ~ 15.5	
ER32-17-A	17 ~ 16	
ER32-17.5-A	17.5 ~ 16.5	
ER32-18-A	18 ~ 17	
ER32-18.5-A	18.5 ~ 17.5	
ER32-19-A	19 ~ 18	
ER32-19.5-A	19.5 ~ 18.5	
ER32-20-A	20 ~ 19	

►ER40-A

规格 Spec	夹持范围 Range	精度等级 Precision
ER40-6-A	6 ~ 5	0.01
ER40-6.5-A	6.5 ~ 5.5	
ER40-7-A	7 ~ 6	
ER40-7.5-A	7.5 ~ 6.5	
ER40-8-A	8 ~ 7	
ER40-8.5-A	8.5 ~ 7.5	
ER40-9-A	9 ~ 8	
ER40-9.5-A	9.5 ~ 8.5	
ER40-10-A	10 ~ 9	
ER40-10.5-A	10.5 ~ 9.5	
ER40-11-A	11 ~ 10	
ER40-11.5-A	11.5 ~ 10.5	
ER40-12-A	12 ~ 11	
ER40-12.5-A	12.5 ~ 11.5	
ER40-13-A	13 ~ 12	
ER40-13.5-A	13.5 ~ 12.5	
ER40-14-A	14 ~ 13	
ER40-14.5	14.5 ~ 13.5	
ER40-15-A	15 ~ 14	
ER40-15.5-A	15.5 ~ 14.5	
ER40-16-A	16 ~ 15	
ER40-16.5-A	16.5 ~ 15.5	
ER40-17-A	17 ~ 16	
ER40-17.5-A	17.5 ~ 16.5	
ER40-18-A	18 ~ 17	
ER40-18.5-A	18.5 ~ 17.5	
ER40-19-A	19 ~ 18	
ER40-19.5-A	19.5 ~ 18.5	
ER40-20-A	20 ~ 19	
ER40-20.5-A	20.5 ~ 19.5	
ER40-21-A	21 ~ 20	
ER40-21.5-A	21.5 ~ 20.5	
ER40-22-A	22 ~ 21	
ER40-22.5-A	22.5 ~ 21.5	
ER40-23-A	23 ~ 22	
ER40-23.5-A	23.5 ~ 22.5	
ER40-24-A	24 ~ 23	
ER40-24.5-A	24.5 ~ 23.5	
ER40-25-A	25 ~ 24	

►ER40-A

规格 Spec	夹持范围 Range	精度等级 Precision
ER40-25.5-A	25.5 ~ 24.5	0.01
ER40-26-A	26 ~ 25	

►ER50-A

规格 Spec	夹持范围 Range	精度等级 Precision
ER50-6-A	6 ~ 5	0.01
ER50-7-A	7 ~ 6	
ER50-8-A	8 ~ 7	
ER50-9-A	9 ~ 8	
ER50-10-A	10 ~ 9	
ER50-11-A	11 ~ 9	
ER50-12-A	12 ~ 10	
ER50-13-A	13 ~ 11	
ER50-14-A	14 ~ 12	
ER50-15-A	15 ~ 13	
ER50-16-A	16 ~ 14	
ER50-17-A	17 ~ 15	
ER50-18-A	18 ~ 16	
ER50-19-A	19 ~ 17	
ER50-20-A	20 ~ 18	
ER50-21-A	21 ~ 19	
ER50-22-A	22 ~ 20	
ER50-23-A	23 ~ 21	
ER50-24-A	24 ~ 22	
ER50-25-A	25 ~ 23	
ER50-26-A	26 ~ 24	
ER50-27-A	27 ~ 25	
ER50-28-A	28 ~ 26	
ER50-29-A	29 ~ 27	
ER50-30-A	30 ~ 28	
ER50-31-A	31 ~ 29	
ER50-32-A	32 ~ 30	
ER50-33-A	33 ~ 31	
ER50-34-A	34 ~ 32	

►ER40-A

规格 Spec	夹持范围 Range	精度等级 Precision
ER40-3-A	3 ~ 2	0.01
ER40-3.5-A	3.5 ~ 2.5	
ER40-4-A	4 ~ 3	
ER40-4.5-A	4.5 ~ 3.5	
ER40-5-A	5 ~ 4	
ER40-5.5-A	5.5 ~ 4.5	

## 6.ER UP 级弹性筒夹 ER UP Grade collet

►ER8-UP

规格 Spec	夹持范围 Range	精度等级 Precision
ER8-1-UP	1 ~ 0.5	0.005
ER8-1.5-UP	1.5 ~ 1	
ER8-2-UP	2 ~ 1.5	
ER8-2.5-UP	2.5 ~ 2	
ER8-3-UP	3 ~ 2.5	
ER8-3.5-UP	3.5 ~ 3	
ER8-4-UP	4 ~ 3.5	
ER8-4.5-UP	4.5 ~ 4	
ER8-5-UP	5 ~ 4.5	

►ER11-UP

规格 Spec	夹持范围 Range	精度等级 Precision
ER11-1-UP	1 ~ 0.5	0.005
ER11-1.5-UP	1.5 ~ 1	
ER11-2-UP	2 ~ 1.5	
ER11-2.5-UP	2.5 ~ 2	
ER11-3-UP	3 ~ 2	
ER11-3.5-UP	3.5 ~ 2.5	
ER11-4-UP	4 ~ 3	
ER11-4.5-UP	4.5 ~ 3.5	
ER11-5-UP	5 ~ 4	
ER11-5.5-UP	5.5 ~ 4.5	
ER11-6-UP	6 ~ 5	
ER11-6.5-UP	6.5 ~ 5.5	
ER11-7-UP	7 ~ 6	

►ER16-UP

规格 Spec	夹持范围 Range	精度等级 Precision
ER16-1-UP	1 ~ 0.5	0.005
ER16-1.5-UP	1.5 ~ 1	
ER16-2-UP	2 ~ 1.5	
ER16-2.5-UP	2.5 ~ 2	
ER16-3-UP	3 ~ 2	
ER16-3.5-UP	3.5 ~ 2.5	
ER16-4-UP	4 ~ 3	
ER16-4.5-UP	4.5 ~ 3.5	
ER16-5-UP	5 ~ 4	
ER16-5.5-UP	5.5 ~ 4.5	
ER16-6-UP	6 ~ 5	
ER16-6.5-UP	6.5 ~ 5.5	

►ER16-UP

规格 Spec	夹持范围 Range	精度等级 Precision
ER16-7-UP	7 ~ 6	0.005
ER16-7.5-UP	7.5 ~ 6.5	
ER16-8-UP	8 ~ 7	
ER16-8.5-UP	8.5 ~ 7.5	
ER16-9-UP	9 ~ 8	
ER16-9.5-UP	9.5 ~ 8.5	
ER16-10-UP	10 ~ 9	

►ER20-UP

规格 Spec	夹持范围 Range	精度等级 Precision
ER20-1-UP	1 ~ 0.5	0.005
ER20-1.5-UP	1.5 ~ 1	
ER20-2-UP	2 ~ 1.5	
ER20-2.5-UP	2.5 ~ 2	
ER20-3-UP	3 ~ 2	
ER20-3.5-UP	3.5 ~ 2.5	
ER20-4-UP	4 ~ 3	
ER20-4.5-UP	4.5 ~ 3.5	
ER20-5-UP	5 ~ 4	
ER20-5.5-UP	5.5 ~ 4.5	
ER11-6-UP	6 ~ 5	
ER20-6.5-UP	6.5 ~ 5.5	
ER20-7-UP	7 ~ 6	
ER20-7.5-UP	7.5 ~ 6.5	
ER20-8-UP	8 ~ 7	
ER20-8.5-UP	8.5 ~ 7.5	
ER20-9-UP	9 ~ 8	
ER20-9.5-UP	9.5 ~ 8.5	
ER20-10-UP	10 ~ 9	
ER20-10.5-UP	10.5 ~ 9.5	
ER20-11-UP	11 ~ 10	
ER20-11.5-UP	11.5 ~ 10.5	
ER20-12-UP	12 ~ 11	
ER20-12.5-UP	12.5 ~ 11.5	
ER20-13-UP	13 ~ 12	

►ER25-UP

规格 Spec	夹持范围 Range	精度等级 Precision
ER25-2-UP	2 ~ 1.5	0.005
ER25-2.5-UP	2.5 ~ 2	
ER25-3-UP	3 ~ 2	
ER25-3.5-UP	3.5 ~ 2.5	
ER25-4-UP	4 ~ 3	
ER25-4.5-UP	4.5 ~ 3.5	
ER25-5-UP	5 ~ 4	
ER25-5.5-UP	5.5 ~ 4.5	
ER25-6-UP	6 ~ 5	
ER25-6.5-UP	6.5 ~ 5.5	
ER25-7-UP	7 ~ 6	
ER25-7.5-UP	7.5 ~ 6.5	
ER25-8-UP	8 ~ 7	
ER25-8.5-UP	8.5 ~ 7.5	
ER25-9-UP	9 ~ 8	
ER25-9.5-UP	9.5 ~ 8.5	
ER25-10-UP	10 ~ 9	
ER25-10.5-UP	10.5 ~ 9.5	
ER25-11-UP	11 ~ 10	
ER25-11.5-UP	11.5 ~ 10.5	
ER25-12-UP	12 ~ 11	
ER25-12.5-UP	12.5 ~ 11.5	
ER25-13-UP	13 ~ 12	
ER25-13.5-UP	13.5 ~ 12.5	
ER25-14-UP	14 ~ 13	
ER25-14.5-UP	14.5 ~ 13.5	
ER25-15-UP	15 ~ 14	
ER25-15.5-UP	15.5 ~ 14.5	
ER25-16-UP	16 ~ 15	

►ER32-UP

规格 Spec	夹持范围 Range	精度等级 Precision
ER32-2-UP	2 ~ 1.5	0.005
ER32-2.5-UP	2.5 ~ 2	
ER32-3-UP	3 ~ 2	
ER32-3.5-UP	3.5 ~ 2.5	
ER32-4-UP	4 ~ 3	
ER32-4.5-UP	4.5 ~ 3.5	
ER32-5-UP	5 ~ 4	

## 6.ER UP 级弹性筒夹 ER UP Grade collet

### ►ER32-UP

规格 Spec	夹持范围 Range	精度等级 Precision
ER32-5.5-UP	5.5 ~ 4.5	0.005
ER32-6-UP	6 ~ 5	
ER32-6.5-UP	6.5 ~ 5.5	
ER32-7-UP	7 ~ 6	
ER32-7.5-UP	7.5 ~ 6.5	
ER32-8-UP	8 ~ 7	
ER32-8.5-UP	8.5 ~ 7.5	
ER32-9-UP	9 ~ 8	
ER32-9.5-UP	9.5 ~ 8.5	
ER32-10-UP	10 ~ 9	
ER32-10.5-UP	10.5 ~ 9.5	
ER32-11-UP	11 ~ 10	
ER32-11.5-UP	11.5 ~ 10.5	
ER32-12-UP	12 ~ 11	
ER32-12.5-UP	12.5 ~ 11.5	
ER32-13-UP	13 ~ 12	
ER32-13.5-UP	13.5 ~ 12.5	
ER32-14-UP	14 ~ 13	
ER32-14.5-UP	14.5 ~ 13.5	
ER32-15-UP	15 ~ 14	
ER32-15.5-UP	15.5 ~ 14.5	
ER32-16-UP	16 ~ 15	
ER32-16.5-UP	16.5 ~ 15.5	
ER32-17-UP	17 ~ 16	
ER32-17.5-UP	17.5 ~ 16.5	
ER32-18-UP	18 ~ 17	
ER32-18.5-UP	18.5 ~ 17.5	
ER32-19-UP	19 ~ 18	
ER32-19.5-UP	19.5 ~ 18.5	
ER32-20-UP	20 ~ 19	

### ►ER40-UP

规格 Spec	夹持范围 Range	精度等级 Precision
ER40-3-UP	3 ~ 2	0.005
ER40-3.5-UP	3.5 ~ 2.5	
ER40-4-UP	4 ~ 3	
ER40-4.5-UP	4.5 ~ 3.5	
ER40-5-UP	5 ~ 4	
ER40-5.5-UP	5.5 ~ 4.5	

### ►ER40-UP

规格 Spec	夹持范围 Range	精度等级 Precision
ER40-6-UP	6 ~ 5	0.005
ER40-6.5-UP	6.5 ~ 5.5	
ER40-7-UP	7 ~ 6	
ER40-7.5-UP	7.5 ~ 6.5	
ER40-8-UP	8 ~ 7	
ER40-8.5-UP	8.5 ~ 7.5	
ER40-9-UP	9 ~ 8	
ER40-9.5-UP	9.5 ~ 8.5	
ER40-10-UP	10 ~ 9	
ER40-10.5-UP	10.5 ~ 9.5	
ER40-11-UP	11 ~ 10	
ER40-11.5-UP	11.5 ~ 10.5	
ER40-12-UP	12 ~ 11	
ER40-12.5-UP	12.5 ~ 11.5	
ER40-13-UP	13 ~ 12	
ER40-13.5-UP	13.5 ~ 12.5	
ER40-14-UP	14 ~ 13	
ER40-14.5-UP	14.5 ~ 13.5	
ER40-15-UP	15 ~ 14	
ER40-15.5-UP	15.5 ~ 14.5	
ER40-16-UP	16 ~ 15	
ER40-16.5-UP	16.5 ~ 15.5	
ER40-17-UP	17 ~ 16	
ER40-17.5-UP	17.5 ~ 16.5	
ER40-18-UP	18 ~ 17	
ER40-18.5-UP	18.5 ~ 17.5	
ER40-19-UP	19 ~ 18	
ER40-19.5-UP	19.5 ~ 18.5	
ER40-20-UP	20 ~ 19	
ER40-20.5-UP	20.5 ~ 19.5	
ER40-21-UP	21 ~ 20	
ER40-21.5-UP	21.5 ~ 20.5	
ER40-22-UP	22 ~ 21	
ER40-22.5-UP	22.5 ~ 21.5	
ER40-23-UP	23 ~ 22	
ER40-23.5-UP	23.5 ~ 22.5	
ER40-24-UP	24 ~ 23	
ER40-24.5-UP	24.5 ~ 23.5	
ER40-25-UP	25 ~ 24	

### ►ER40-UP

规格 Spec	夹持范围 Range	精度等级 Precision
ER40-25.5-UP	25.5 ~ 24.5	0.005
ER40-26-UP	26 ~ 25	

### ►ER50-UP

规格 Spec	夹持范围 Range	精度等级 Precision
ER50-6-UP	6 ~ 5	0.005
ER50-7-UP	7 ~ 6	
ER50-8-UP	8 ~ 7	
ER50-9-UP	9 ~ 8	
ER50-10-UP	10 ~ 9	
ER50-11-UP	11 ~ 9	
ER50-12-UP	12 ~ 10	
ER50-13-UP	13 ~ 11	
ER50-14-UP	14 ~ 12	
ER50-15-UP	15 ~ 13	
ER50-16-UP	16 ~ 14	
ER50-17-UP	17 ~ 15	
ER50-18-UP	18 ~ 16	
ER50-19-UP	19 ~ 17	
ER50-20-UP	20 ~ 18	
ER50-21-UP	21 ~ 19	
ER50-22-UP	22 ~ 20	
ER50-23-UP	23 ~ 21	
ER50-24-UP	24 ~ 22	
ER50-25-UP	25 ~ 23	
ER50-26-UP	26 ~ 24	
ER50-27-UP	27 ~ 25	
ER50-28-UP	28 ~ 26	
ER50-29-UP	29 ~ 27	
ER50-30-UP	30 ~ 28	
ER50-31-UP	31 ~ 29	
ER50-32-UP	32 ~ 30	
ER50-33-UP	33 ~ 31	
ER50-34-UP	34 ~ 32	

## 6.ER 弹性筒夹 (英制) ER Collet (inch size)

### ►ER8

规格 Spec	夹持范围 Range
ER8-1/16	0.043" ~ 0.062"
ER8-1/8	0.086" ~ 0.125"
ER8-3/16	0.148" ~ 0.187"

### ►ER11

规格 Spec	夹持范围 Range
ER11-1/16	0.043" ~ 0.062"
ER11-3/32	0.054" ~ 0.093"
ER11-1/8	0.086" ~ 0.125"
ER11-5/32	0.117" ~ 0.156"
ER11-3/16	0.148" ~ 0.187"
ER11-7/32	0.179" ~ 0.218"
ER11-1/4	0.211" ~ 0.250"

### ►ER16

规格 Spec	夹持范围 Range
ER16-1/16	0.043" ~ 0.062"
ER16-3/32	0.054" ~ 0.093"
ER16-1/8	0.086" ~ 0.125"
ER16-5/32	0.117" ~ 0.156"
ER16-3/16	0.148" ~ 0.187"
ER16-7/32	0.179" ~ 0.218"
ER16-1/4	0.211" ~ 0.250"
ER16-9/32	0.242" ~ 0.281"
ER16-5/16	0.283" ~ 0.312"
ER16-11/32	0.304" ~ 0.343"
ER16-3/8	0.336" ~ 0.375"
ER16-13/32	0.367" ~ 0.406"

### ►ER20

规格 Spec	夹持范围 Range
ER20-1/16	0.043" ~ 0.062"
ER20-3/32	0.054" ~ 0.093"
ER20-1/8	0.086" ~ 0.125"
ER20-5/32	0.117" ~ 0.156"
ER20-3/16	0.148" ~ 0.187"
ER20-7/32	0.179" ~ 0.218"
ER20-1/4	0.211" ~ 0.250"
ER20-9/32	0.242" ~ 0.281"
ER20-5/16	0.283" ~ 0.312"
ER20-11/32	0.304" ~ 0.343"
ER20-3/8	0.336" ~ 0.375"
ER20-13/32	0.367" ~ 0.406"
ER20-7/16	0.398" ~ 0.437"
ER20-15/32	0.429" ~ 0.468"
ER20-1/2	0.461" ~ 0.500"

### ►ER25

规格 Spec	夹持范围 Range
ER25-3/32	0.054" ~ 0.093"
ER25-1/8	0.086" ~ 0.125"
ER25-5/32	0.117" ~ 0.156"
ER25-3/16	0.148" ~ 0.187"
ER25-7/32	0.179" ~ 0.218"
ER25-1/4	0.211" ~ 0.250"
ER25-9/32	0.242" ~ 0.281"
ER25-5/16	0.283" ~ 0.312"
ER25-11/32	0.304" ~ 0.343"
ER25-3/8	0.336" ~ 0.375"
ER25-13/32	0.367" ~ 0.406"
ER25-7/16	0.398" ~ 0.437"
ER25-15/32	0.429" ~ 0.468"
ER25-17/32	0.492" ~ 0.531"
ER25-9/16	0.523" ~ 0.562"
ER25-19/32	0.554" ~ 0.593"
ER25-5/8	0.586" ~ 0.625"

### ►ER32

规格 Spec	夹持范围 Range
ER32-1/16	0.043" ~ 0.062"
ER32-3/32	0.054" ~ 0.093"
ER32-1/8	0.086" ~ 0.125"
ER32-5/32	0.117" ~ 0.156"
ER32-3/16	0.148" ~ 0.187"
ER32-7/32	0.179" ~ 0.218"
ER32-1/4	0.211" ~ 0.250"
ER32-9/32	0.242" ~ 0.281"
ER32-5/16	0.283" ~ 0.312"
ER32-11/32	0.304" ~ 0.343"
ER32-3/8	0.336" ~ 0.375"
ER32-13/32	0.367" ~ 0.406"
ER32-7/16	0.398" ~ 0.437"
ER32-15/32	0.429" ~ 0.468"
ER32-1/2	0.461" ~ 0.500"
ER32-17/32	0.492" ~ 0.531"
ER32-9/16	0.523" ~ 0.562"
ER32-19/32	0.554" ~ 0.593"
ER32-5/8	0.586" ~ 0.625"
ER32-21/32	0.617" ~ 0.656"
ER32-11/16	0.648" ~ 0.687"
ER32-23/32	0.679" ~ 0.718"
ER32-3/4	0.711" ~ 0.750"

### ►ER40

规格 Spec	夹持范围 Range
ER40-1/8	0.086" ~ 0.125"
ER40-5/32	0.117" ~ 0.156"
ER40-3/16	0.148" ~ 0.187"
ER40-7/32	0.179" ~ 0.218"
ER40-1/4	0.211" ~ 0.250"
ER40-9/32	0.242" ~ 0.281"
ER40-5/16	0.283" ~ 0.312"
ER40-11/32	0.304" ~ 0.343"
ER40-3/8	0.336" ~ 0.375"
ER40-13/32	0.367" ~ 0.406"

### ►ER40

规格 Spec	夹持范围 Range
ER40-7/16	0.398" ~ 0.437"
ER40-15/32	0.429" ~ 0.468"
ER40-1/2	0.461" ~ 0.500"
ER40-17/32	0.492" ~ 0.531"
ER40-9/16	0.523" ~ 0.562"
ER40-19/32	0.554" ~ 0.593"
ER40-5/8	0.586" ~ 0.625"
ER40-21/32	0.617" ~ 0.656"
ER40-11/16	0.648" ~ 0.687"
ER40-23/32	0.679" ~ 0.718"
ER40-3/4	0.711" ~ 0.750"
ER40-7/8	0.836" ~ 0.875"
ER40-1	0.961" ~ 1.00"

### ►ER50

规格 Spec	夹持范围 Range
ER50-7/32	0.179" ~ 0.219"
ER50-1/4	0.211" ~ 0.250"
ER50-5/16	0.273" ~ 0.313"
ER50-11/32	0.304" ~ 0.344"
ER50-3/8	0.336" ~ 0.375"
ER50-7/16	0.359" ~ 0.438"
ER50-17/32	0.453" ~ 0.531"
ER50-5/8	0.546" ~ 0.625"
ER50-11/16	0.609" ~ 0.688"
ER50-25/32	0.703" ~ 0.781"
ER50-27/32	0.765" ~ 0.844"
ER50-15/16	0.859" ~ 0.938"
ER50-1	0.921" ~ 1.000"
ER50-1-3/32	1.015" ~ 1.094"
ER50-1-3/16	1.109" ~ 1.188"
ER50-1-1/4	1.171" ~ 1.250"
ER50-1-5/16	1.234" ~ 1.313"

7. 承接非标订做  
OEM Service available

数控车床各类高精度主轴(CNC lathe various types of main axle)



气动夹头锥套  
(PNEUMATIC CHUCK SLEEVE)

本产品主要用于超精密气动主轴夹座。本品具有精度高(跳动 $\leq 0.001$ )，重复定位精度高特点。主要用于PCB钻针检测，精密刀具检测、薄壁件、脆弱件的精密定位夹持等。



高精度机床主轴  
High precision machine main axle

西铁城L16主轴，承接数控车床主轴设计、生产；精度及耐用度与进口产品媲美。



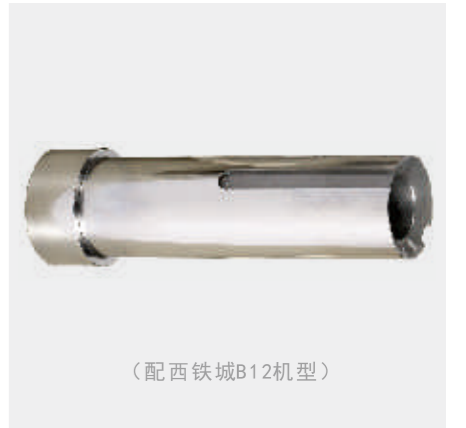
所有T-ONE导套、尾部螺纹一律采用螺纹磨床精密磨削而成。由于磨削螺纹也是采用两端中心孔为工艺基准，保证了与导套定位圆柱面及定位锥面磨削工艺基准的统一性，与传统的车削螺纹相比，具有更好的同轴度和螺纹精度。来图来样可设计、生产：各类高精度、高品质夹头、导套；各类机床高精度主轴。

7. 承接非标订做  
OEM Service available

持续不懈的追求技术创新(A hot Pursuit Of Creativity in Technology Development)



导套锥套  
GUIDE BUSH & TAPER SLEEVE



(配西铁城B12机型)

非标夹头  
Nonstandard collet



可承接四方孔、六角孔、偏心夹头订做

送料夹、双头、单头延长杆  
Feed chuck double ended, single ended rod

在开发新技术方面，我们始终不断地投入资源和提升创新能力。各种各样的弹性夹头、钻头可供您选择，我们将设计和生产您的订单，即使是一块。  
Our creative resources are always being put to maximum use in developing new technologies  
Great variety of collet chucks for drills are available for your choice, finger chuck, drill & tap holders, We will design and manufacture to your order for even a single piece.

我们可以为您的夹头、导套提供再加工和维修。  
We offer to regrind or repair your collet chucks and chuck guide bush.